

# Understanding Crime-Place Networks



Lt. Colonel Maris Herold, M.S.

University of Cincinnati Police Department

Dr. Tamara D. Madensen (Ph.D.)

University of Nevada, Las Vegas

27<sup>th</sup> Annual Problem-Oriented Policing Conference

October 2-4, 2017

Houston, Texas

# Crime-Place Theory and Research

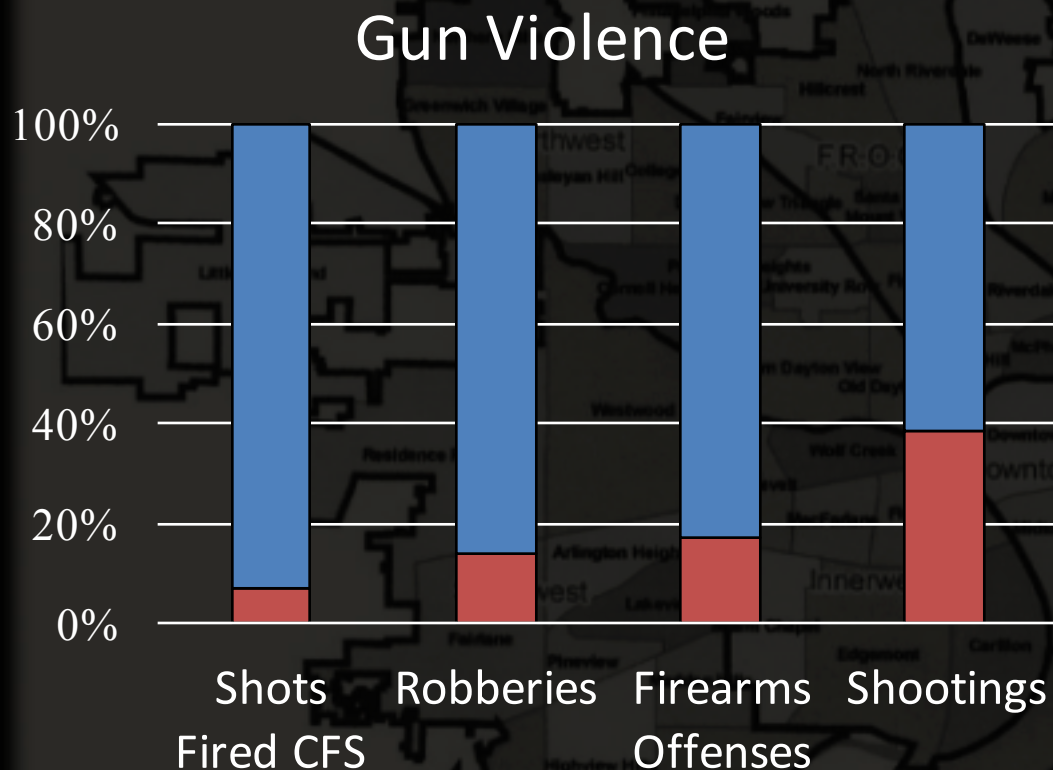
# Research Evidence that Supports Violent Network Investigations

- Crime is concentrated across places, offenders, victims
  - 80-20 Rule
- Offenders, victims, and crime places are networked.
- Persistent crime hotspots result from overlapping networks.
- Most violent crime, across any city, occurs in small, identifiable micro-locations.



# Violence Concentration in Dayton

1.3% of Dayton's total land mass (<0.7 sq mi)\*:



- 7.1% of shots fired calls-for-service
- 13.9% of robberies
- 17.2% of firearms offenses
- 38.6% of shootings

\*Excludes airport land use

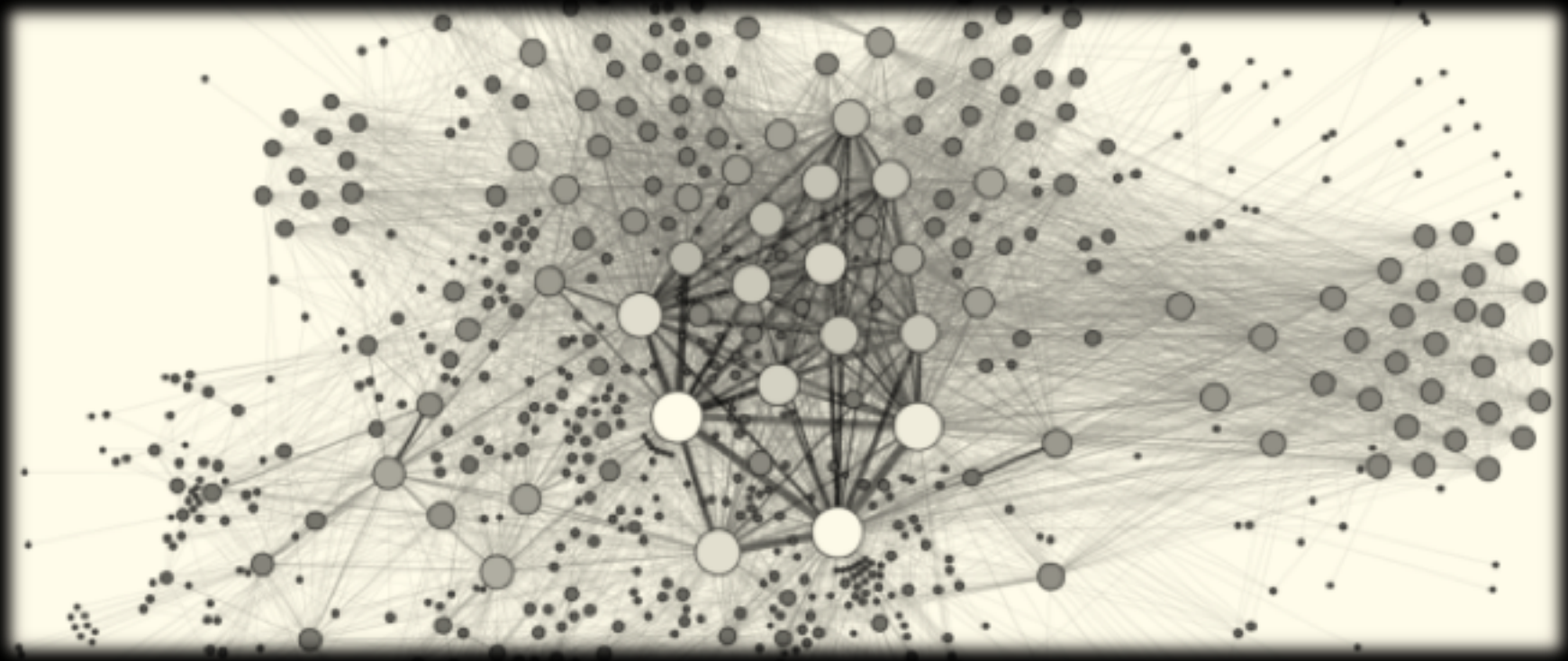


# Crime Place Networks

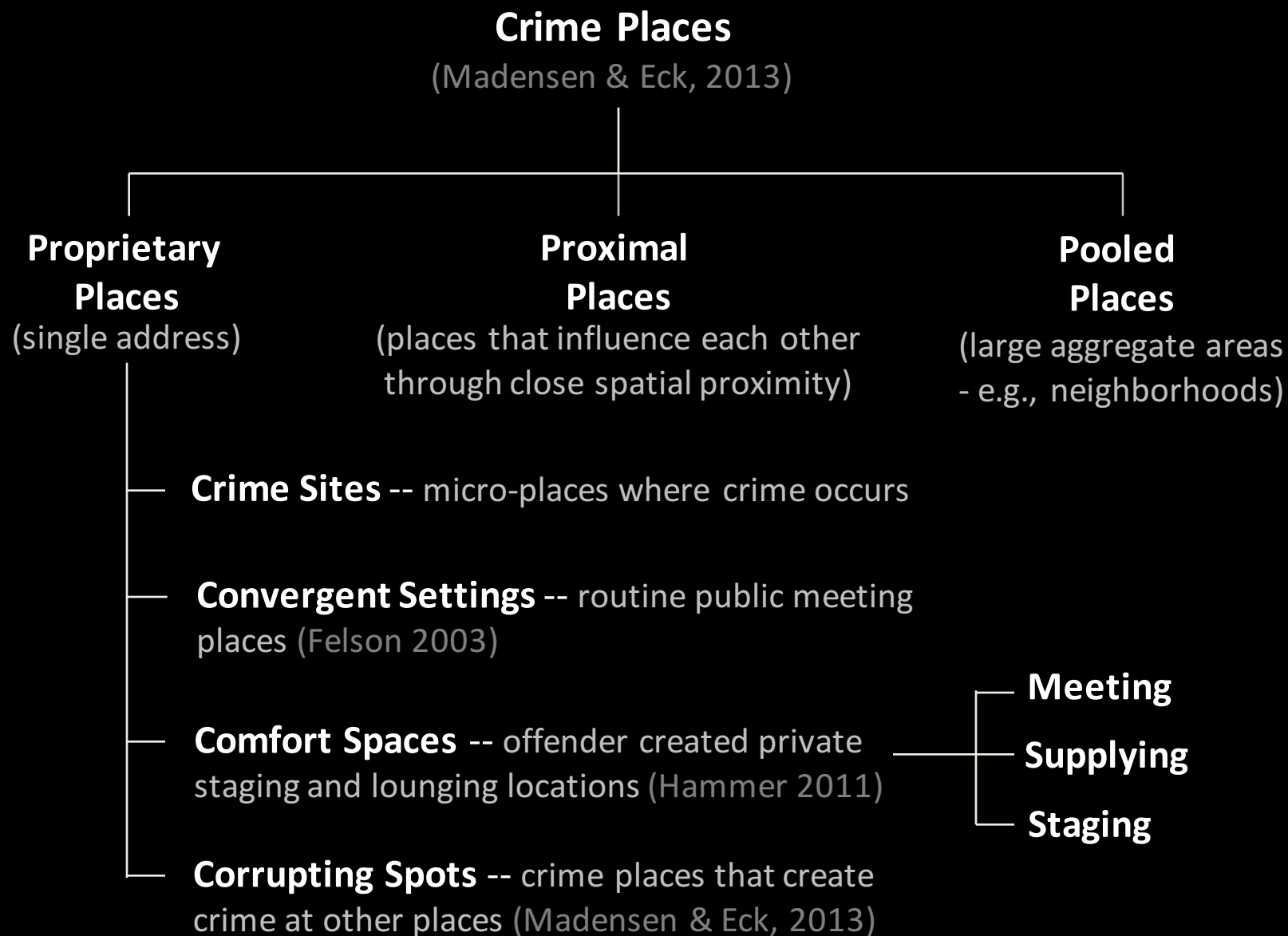
What are they and how are they used?

# Violent Network Investigations

- Place networks create criminogenic infrastructures that support violent activity



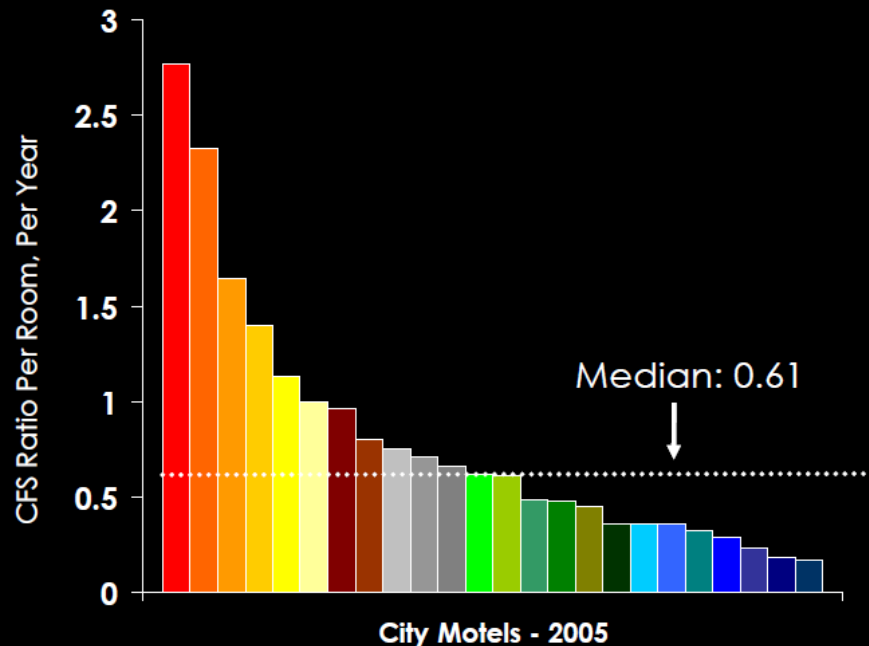
# Organization of Violent Place Networks



# Crime Sites

- Repeat addresses – concentrations of crime at particular locations
  - Shows up on crime maps

CFS Per Room, Per Year to Motels: 2005



Chula Vista Police Department



- Risky facilities – the distribution of crime within a set (specific type) of proprietary places.



# Convergent Settings

- Public places that facilitate the meeting of potential offenders
  - Offenders have limited control or privacy
  - Used mostly by non-offenders (offenders hide behind legitimate activities)





# Comfort Spaces

- Private places, controlled by offenders, used to carry out criminal activity
  - Staging – close to crime site/observation with little risk of apprehension
  - Supplying – stash location of stolen goods or illicit supplies
  - Meeting – socialize, plan, party



Apartments



Abbottabad

# Corrupting Spots

- Support transactions that facilitate crime elsewhere
  - Initial crimes occur in other locations
  - Consensual crimes (money laundering, buying stolen property)



Cincinnati recycling owner arrested on six charges of failing to keep records.



# Crime-Place Networks

## In Action

# Crime Places and Copper Theft

Crime Sites →

Copper condensing  
air-conditioning units



Light/telephone poles &  
power stations



Vacant/foreclosed  
properties



Churches

# Crime Places and Copper Theft

What we see

What we don't see

Crime Sites

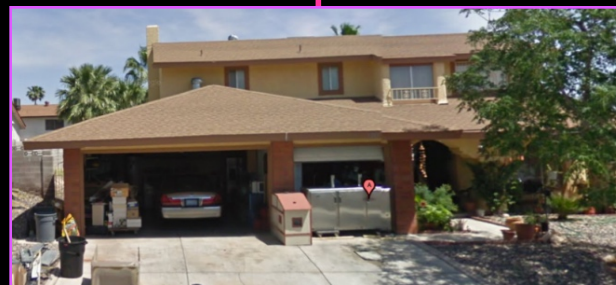


Comfort Space



Staging location  
where offenders park &  
meet close to crime sites

Comfort Space



Supplying location  
where metal is stored

Corrupting Spot



Recycling Plant

Convergent Setting

extra cash and removal of your recycle items - \$1 (valley wide pick up)

Date: 2011-10-03, 10:13AM PDT  
Reply to: see below [craigslist.org](#)

i will buy and haul off your unwanted junk such as any metal and recycle items, batteries, old car parts, cans please call 702-

craigslist

# Proprietary Places: Different Roles in the Crime Process

	Long Before	Just Before	During	After
Crime Site			X	
Convergent Setting	X	X		X
Comfort Space	X	X		X
Meeting	X	X		X
Supplying	X	X		X
Staging		X		
Corrupting Spot	X			X

If we focus solely on crime sites,  
we ignore other stages and facilitators of the crime process.

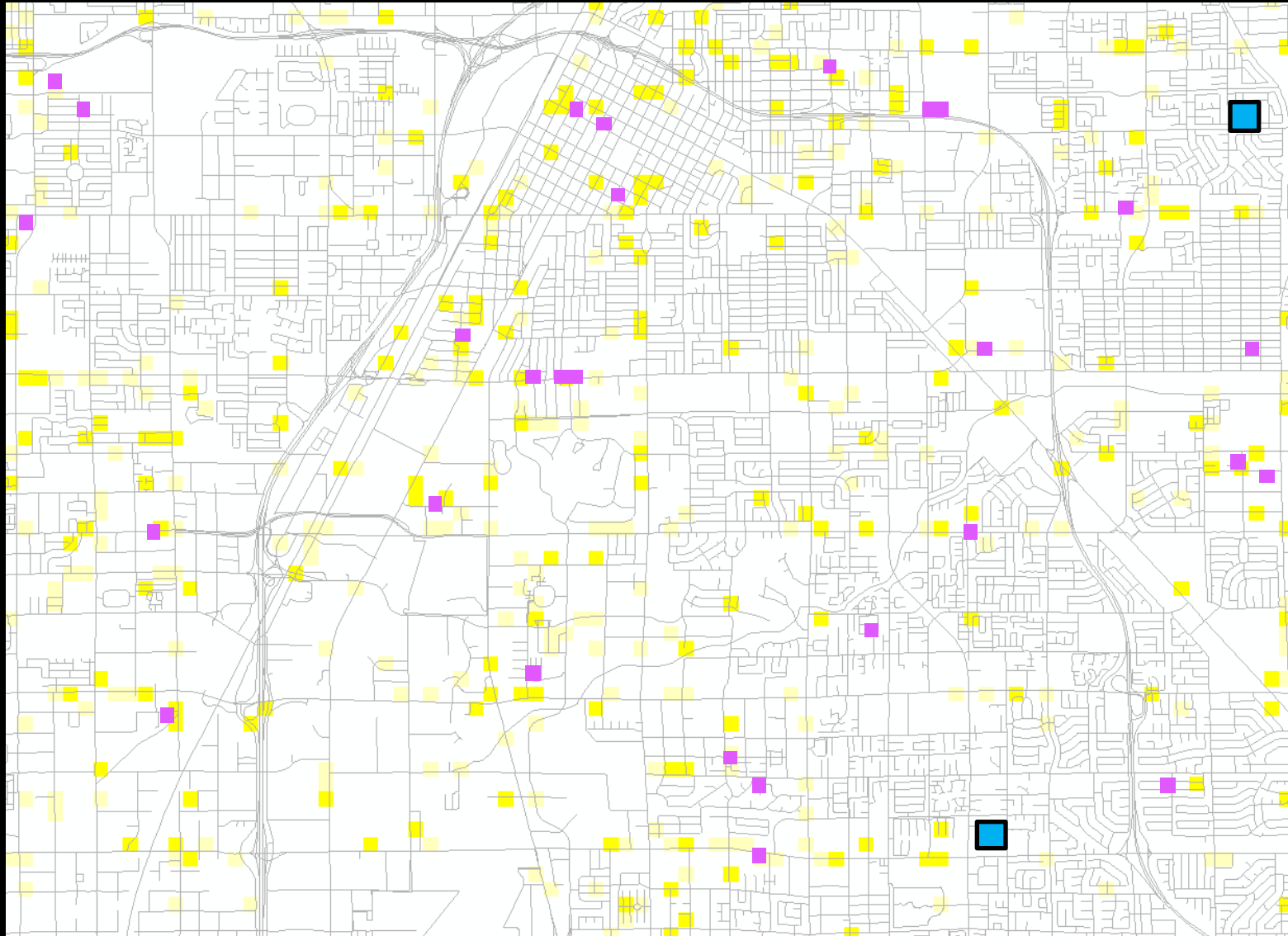
# Crime Hotspot Map

■ Crime Sites

■ Comfort Spaces

■ Convergent Settings

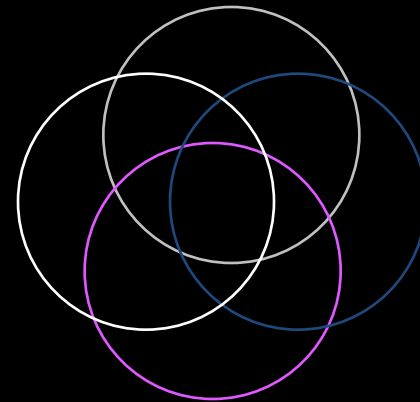
■ Corrupting Spots



# Mixed Use Places

(e.g., a drug dealing site outside a corner store)

- Crime Site – repeat dealing and assaults
- Convergent Setting – gathering spot for youth
- Comfort Space – hangout at back of store
- Corrupting Spot – prompts street robberies nearby



# Crime Place Networks

2+ connected proprietary places that are:

- Created/used by a single criminal group
- Clustered around an illicit market
  - Multiple offenders/offender groups
- Created by a single owner
- Clustered in a single neighborhood or linked through networked offenders
  - Even nationally or internationally



# Crime-Place Networks

Investigation Examples

# Place-Based Investigation Example



Poinciana Apartments  
3522 Reading Road



# Afghanistan Gang Territory

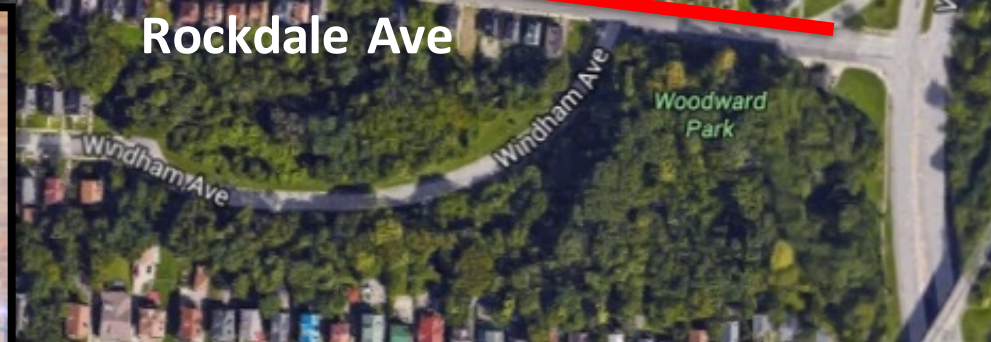
Forest Ave

Reading Rd

Lexington Ave

Hutchins Ave

Rockdale Ave



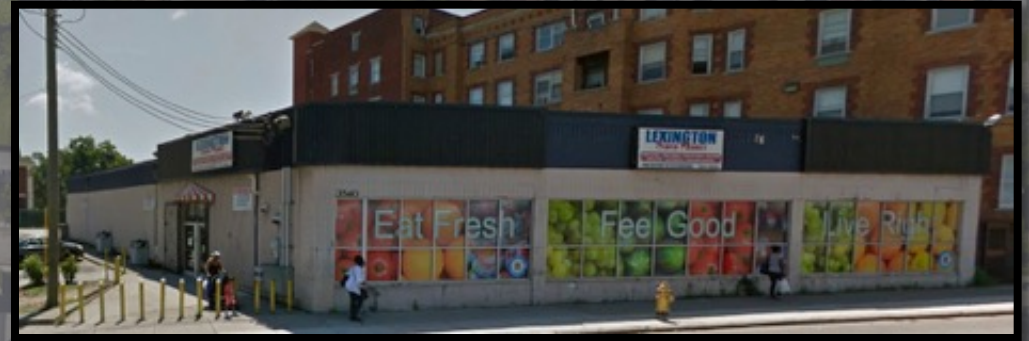


# Place Network Investigation



○ Crime Site – Most violent proprietary location in Avondale neighborhood

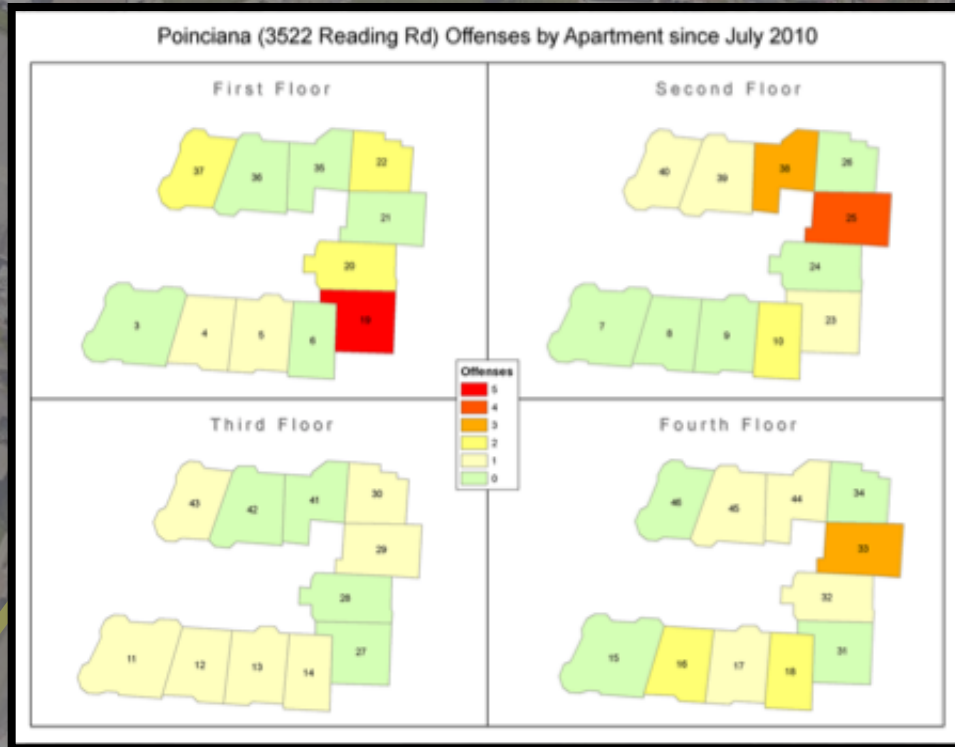
# Place Network Investigation



- Crime Site – Most violent proprietary location in Avondale neighborhood
- Convergent Settings – Lincoln Statue, Lexington Supermarket

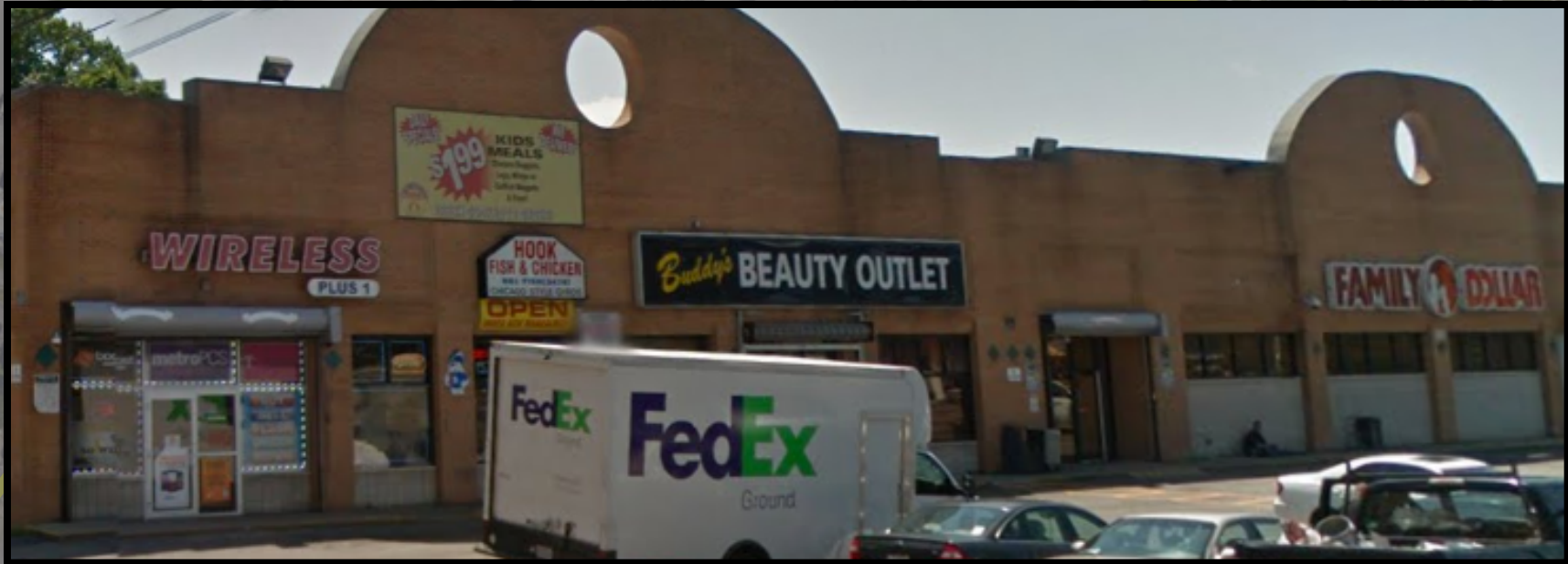


# Place Network Investigation



- Crime Site – Most violent proprietary location in Avondale neighborhood
- Convergent Settings – Lincoln Statue, Lexington Supermarket
- Comfort Spaces – Specific apt. units, Nearby residences

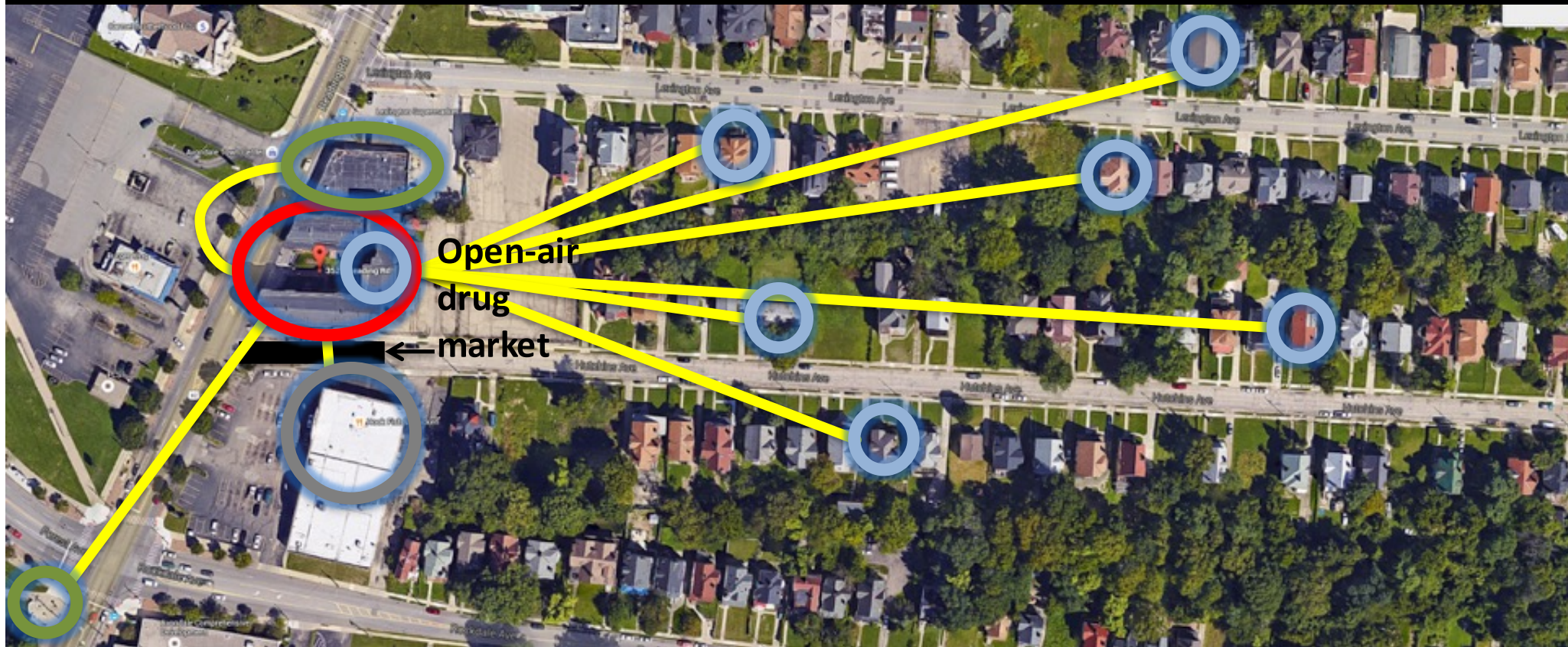
# Place Network Investigation







- Crime Site – Most violent proprietary location in Avondale neighborhood
- Convergent Settings – Lincoln Statue, Lexington Supermarket
- Comfort Spaces – Specific apt. units, Nearby residences
- Corrupting Spots – Nearby businesses (some facilitators)



# Place Network Investigation



-  Crime Site – Most violent proprietary location in Avondale neighborhood
-  Convergent Settings – Lincoln Statue, Lexington Supermarket
-  Comfort Spaces – Specific apt. units, Nearby residences
-  Corrupting Spots – Nearby businesses (some facilitators)

# Investigative Techniques

## ***Intelligence***

---

- Conduct intelligence briefings with beat officers, detectives, specialized units (e.g., violent crime, gang, vice, homicide), crime analysts, all city departments, and community members, including community service personnel (e.g., postal service), to identify key players and places involved in possible network activities.
  - Gather intelligence from municipal, state, and federal databases on historical place violations and ownership connections among places.
- 

## ***Surveillance***

---

- Video and photograph the initial and changing physical characteristics and social dynamics of key places.
  - Conduct ongoing surveillance of place and offender activities (e.g., temporary surveillance cameras, undercover officers).
- 

## ***Sources of Information and Confidential Informants***

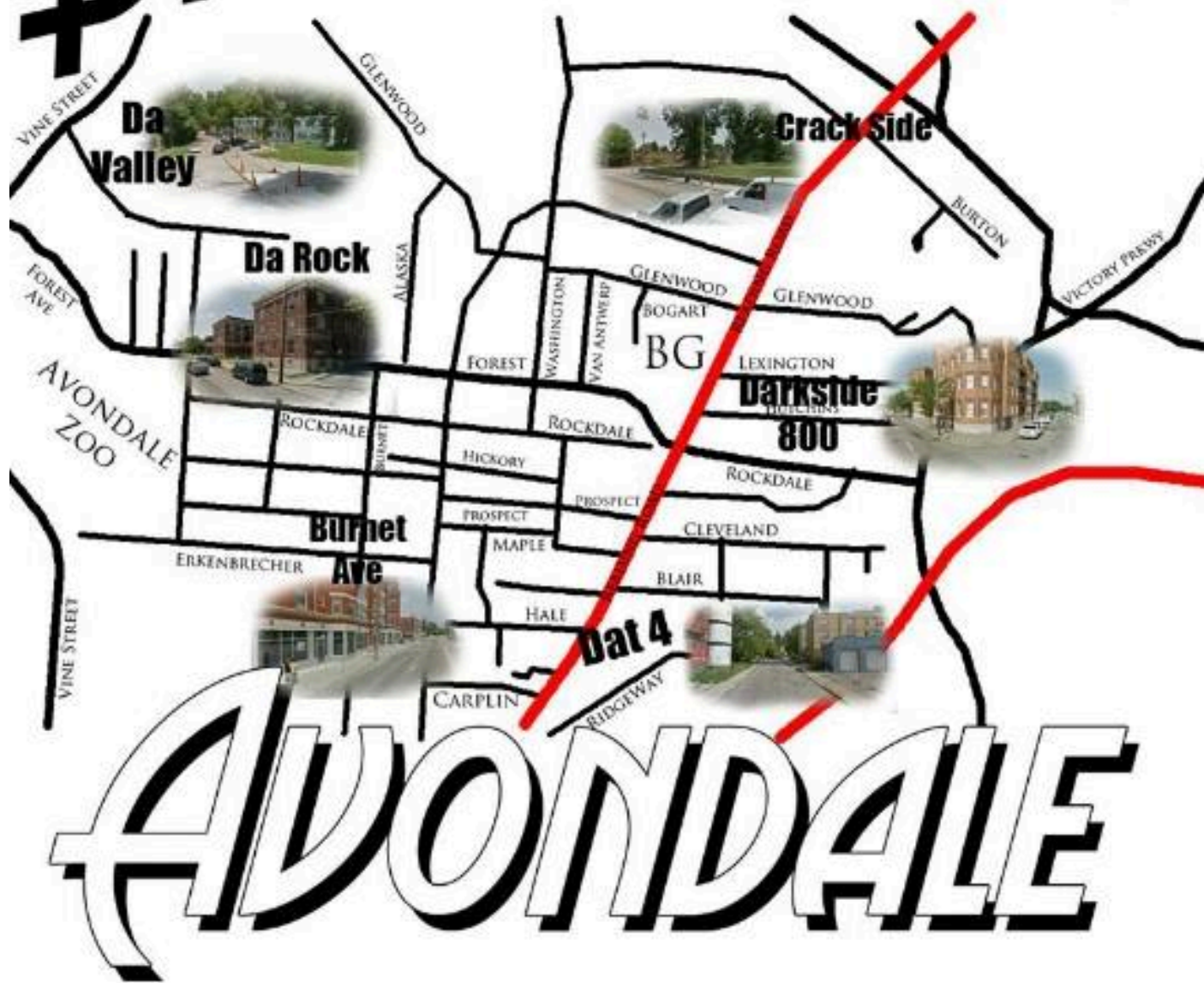
---

- Develop internal and external confidential informants to investigate place activities (e.g., security personnel, management personnel, labor contractors, existing CIs).
  - Train confidential informants to gather place-based intelligence (e.g., manager involvement/knowledge of illicit activities, offender movement among places).
-



# BITCH *Im* FROM

Social  
Media



### PROPERTY INFORMATION

- |  |   |
|--|---|
| <input type="checkbox"/> List of Businesses              | <input type="checkbox"/> List of Public Spaces/Other        |
| <input type="checkbox"/> List of Multi-Family Residences | <input type="checkbox"/> List of Single-Family Residences   |
| <input type="checkbox"/> List of Vacant Properties       | <input type="checkbox"/> Property Owner Profiles & Networks |

### Crime Sites

(list up to ten places where crime is most concentrated – address, property type, # CFS)

1. <input type="text"/>	2. <input type="text"/>
3. <input type="text"/>	4. <input type="text"/>
5. <input type="text"/>	6. <input type="text"/>
7. <input type="text"/>	8. <input type="text"/>
9. <input type="text"/>	10. <input type="text"/>

### HISTORICAL POLICE DATA ANALYSIS

- |  |  |
|--|--|
| <input type="checkbox"/> Part I & Part II Crime Trends       | <input type="checkbox"/> Calls for Service Trends      |
| <input type="checkbox"/> Journey to Crime (Offender Address) | <input type="checkbox"/> Arrest Trends                 |
| <input type="checkbox"/> Offender Profiles                   | <input type="checkbox"/> Victim Profiles               |
| <input type="checkbox"/> FI Card Analysis                    | <input type="checkbox"/> Gang Affiliations in Location |

Other Historical Police Data Analysis Documents  
(describe)

1. <input type="text"/>	2. <input type="text"/>
3. <input type="text"/>	4. <input type="text"/>

- Place investigation checklist
  - Location/Personnel
  - Property Info
  - Historical Data
  - Police Intel
  - Community Intel
  - City Intel
  - County/State/Fed Intel

# Dayton, Ohio



Richard Biehl  
Director and Chief of Police





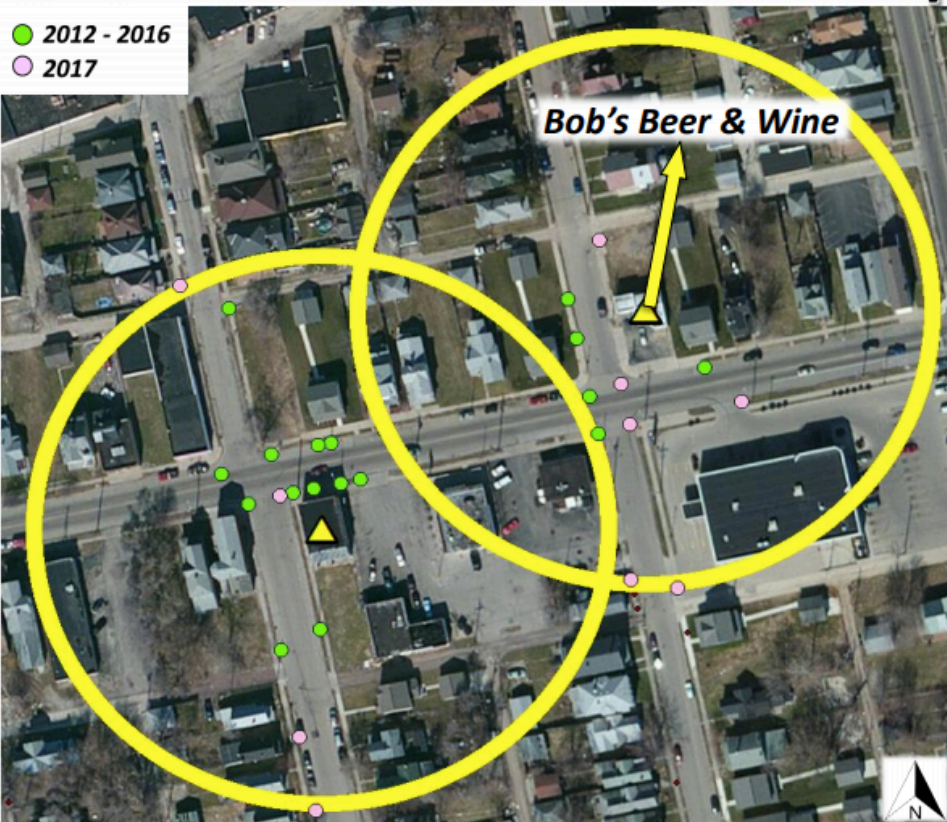
# **PLACE BASED LOCATIONS**

*DAYTON POLICE DEPARTMENT*





# Place Based Target Locations: East Patrol Operations Division

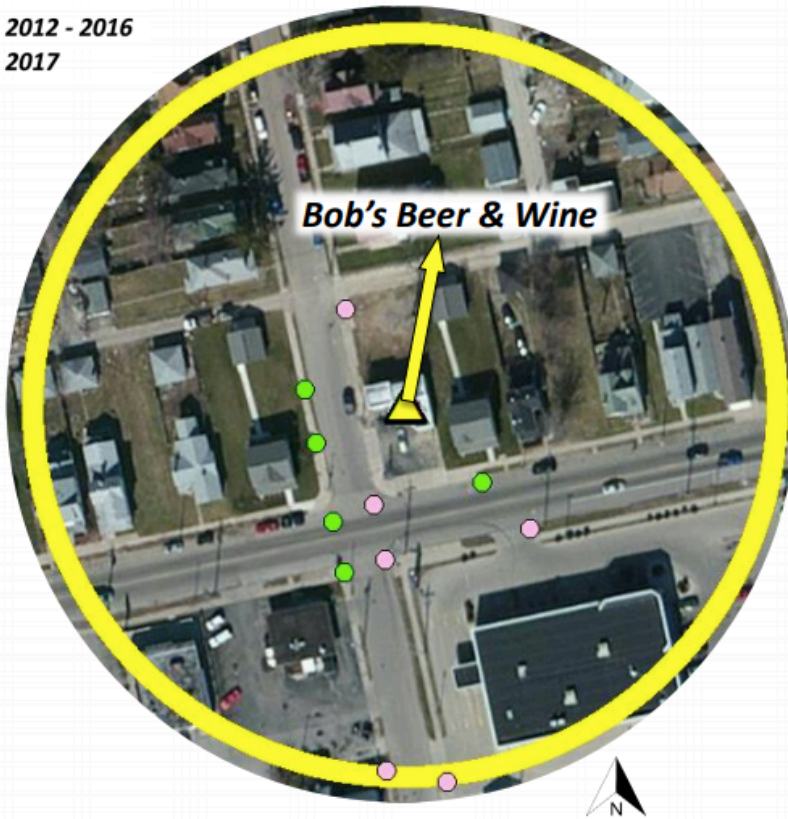


- *Within the East side of Dayton, there's a major thoroughfare with commercial and residential structures with a history of firearm and drug related crimes.*
- *These two (2) locations, accounted for the majority of firearm crimes being committed, with a tenth of a mile, in diameter, buffer.*
- *Bob's Beer & Wine has had undercover operations conducted, with further investigation and analysis pending.*
- *There are two other locations that officers are still collecting intelligence on, in order to proceed with undercover operations.*



# Bob's Beer & Wine

● 2012 - 2016  
● 2017



- 45 gun and/or drug crimes committed within the red box from 2012 through September 24, 2017. Only 13 of those crimes were committed in 2017.
- Undercover operations took place May 13, 2017 – June 13, 2017. Which consisted of one (1) undercover purchase of cigarettes to a minor and four (4) undercover purchases of drug paraphernalia called a 'bubble' – a slang term for a glass pipe that methamphetamines are smoked out of.
- Search Warrant was served on location and clerk selling these items, and the following items were recovered from the location:
  - Methamphetamine
  - Heroin
  - used syringes
  - Paraphernalia to include methamphetamine pipes
- Currently working with Dayton Fire Department in order to address any safety concerns, and to conduct follow-up inspections for this address that are not compliant with the Fire Code.

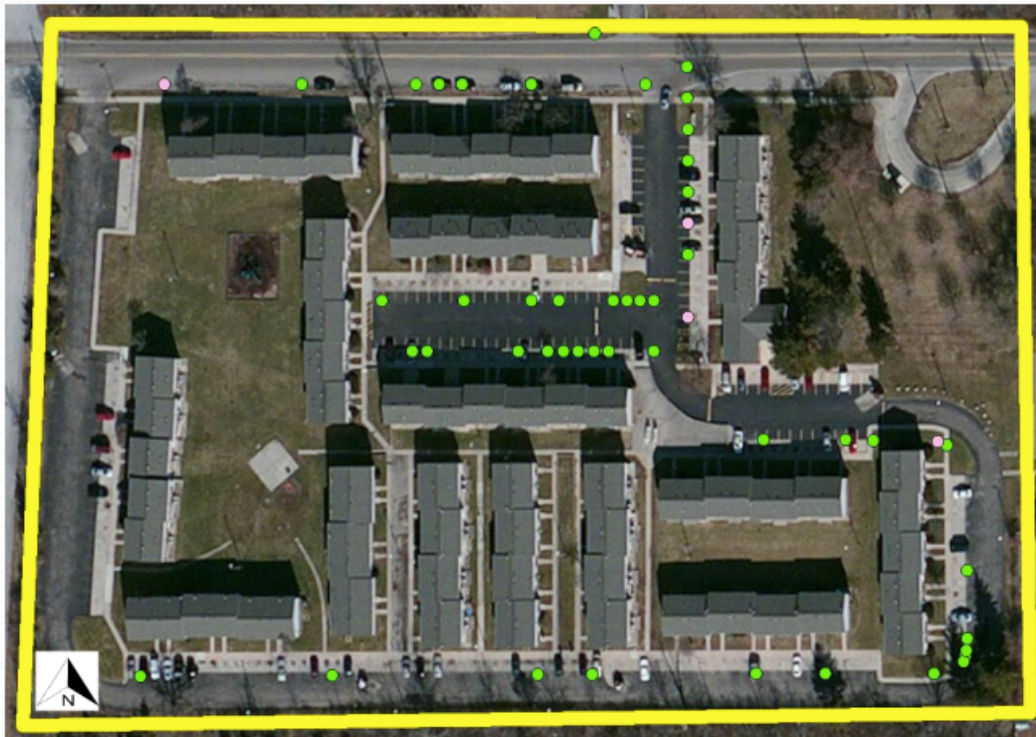
*Undercover operations and analysis still ongoing.*

DAYTON



# Place Based Target Locations: West Patrol Operations Division

● 2012 - 2016  
● 2017



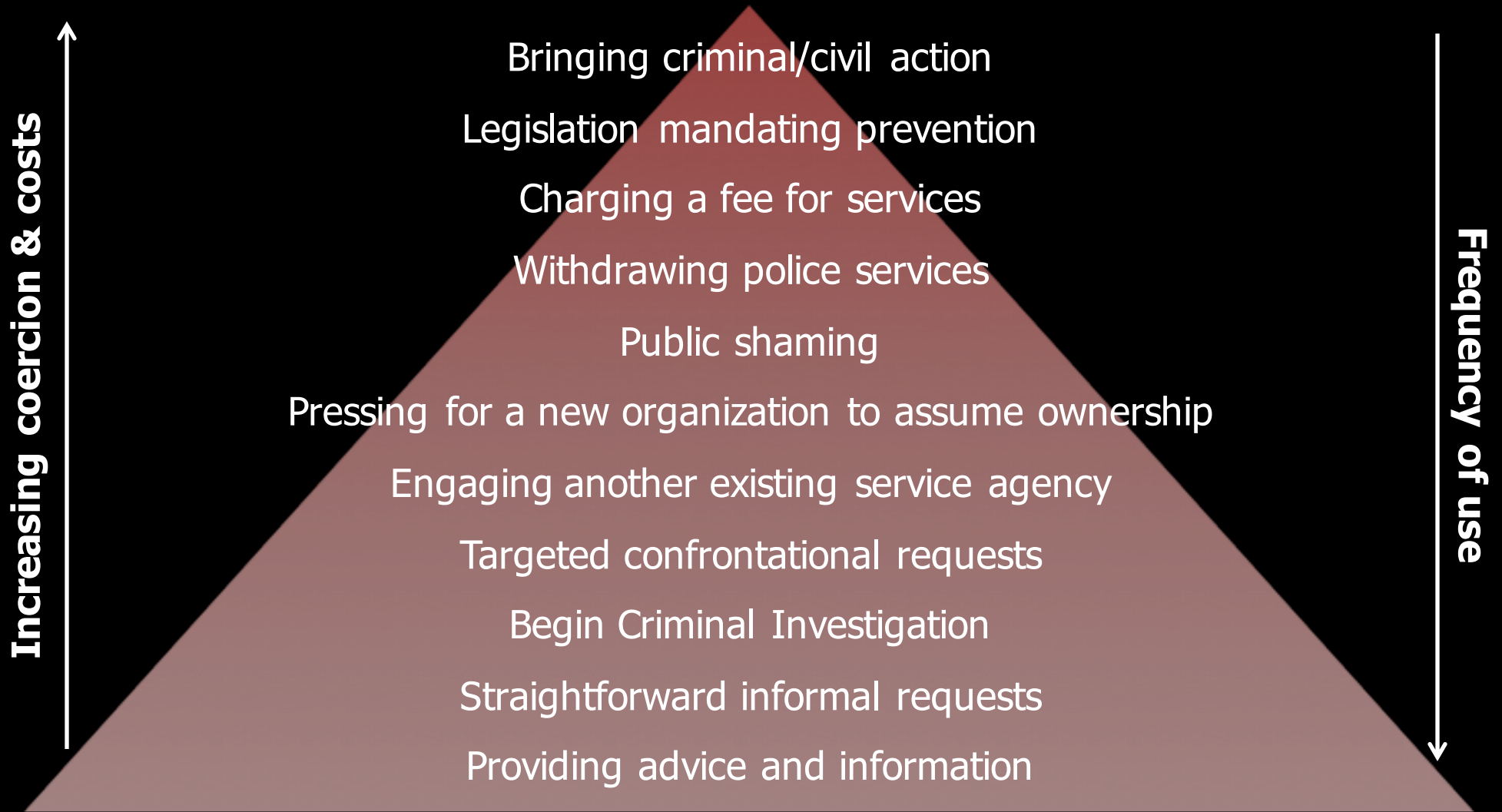
- *A large apartment complex with a history of firearm and drug related crimes from 2012 through 2016.*
- *Officers have been working undercover since May of 2017, and have identified a few target individuals who are dealing drugs within this complex.*
- *The individuals have since moved on, and are currently being investigated.*
- *117 arrests have been made in 2017 for the drug and firearm related crimes.*

# Crime-Place Networks

## Responses



# Goldstein's Hierarchy of Interventions



## PLACE-BASED APPROACH

Shifting and Sharing Responsibility for Public Safety Problems

Popcenter.org

# popcenter.org



**COPS**  
Community Oriented Policing Services  
U.S. Department of Justice



Response Guides Series  
Problem-Oriented Guides for Police

No. 11

## Using Civil Actions Against Property to Control Crime Problems

Martha J. Smith and Lorraine Mazerolle



Center for  
Problem-Oriented Policing

U.S. Department of Justice  
Office of Community Oriented Policing Services



**COPS**  
COMMUNITY ORIENTED POLICING SERVICES  
U.S. DEPARTMENT OF JUSTICE

Problem-Oriented Guides for Police  
Response Guide Series  
No. 3

## Shifting and Sharing Responsibility for Public Safety Problems

by  
Michael S. Scott  
Herman Goldstein



[www.cops.usdoj.gov](http://www.cops.usdoj.gov)

# Understanding Crime-Place Networks

**Lt. Colonel Maris Herold**

University of Cincinnati Police Department

Maris.Herold@uc.edu

**Police Chief Richard Biehl**

Dayton Police Department

Richard.Biehl@daytonohio.gov

**Dr. Tamara D. Madensen**

University of Nevada, Las Vegas

Tamara.Madensen@unlv.edu