

CINCINNATI POLICE DEPARTMENT

Problem Solving Project Review:
McMicken PATH Project

October 19-21, 2015

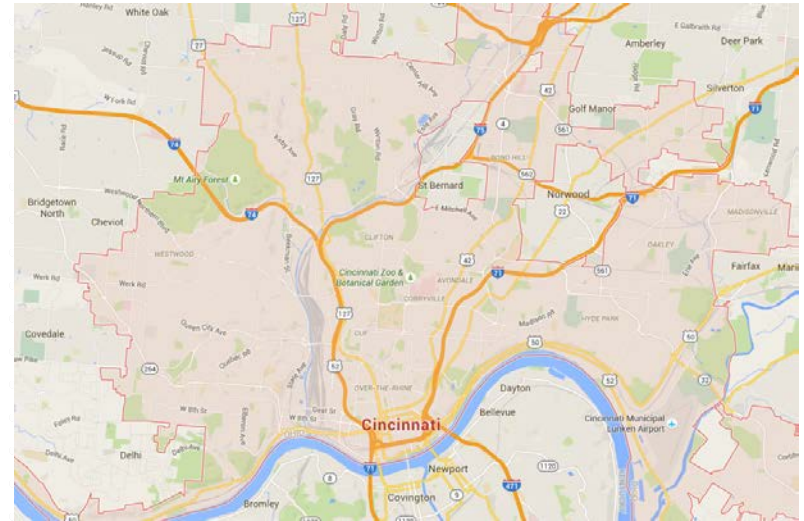
Captain Michael John

Police Specialist Nate Young



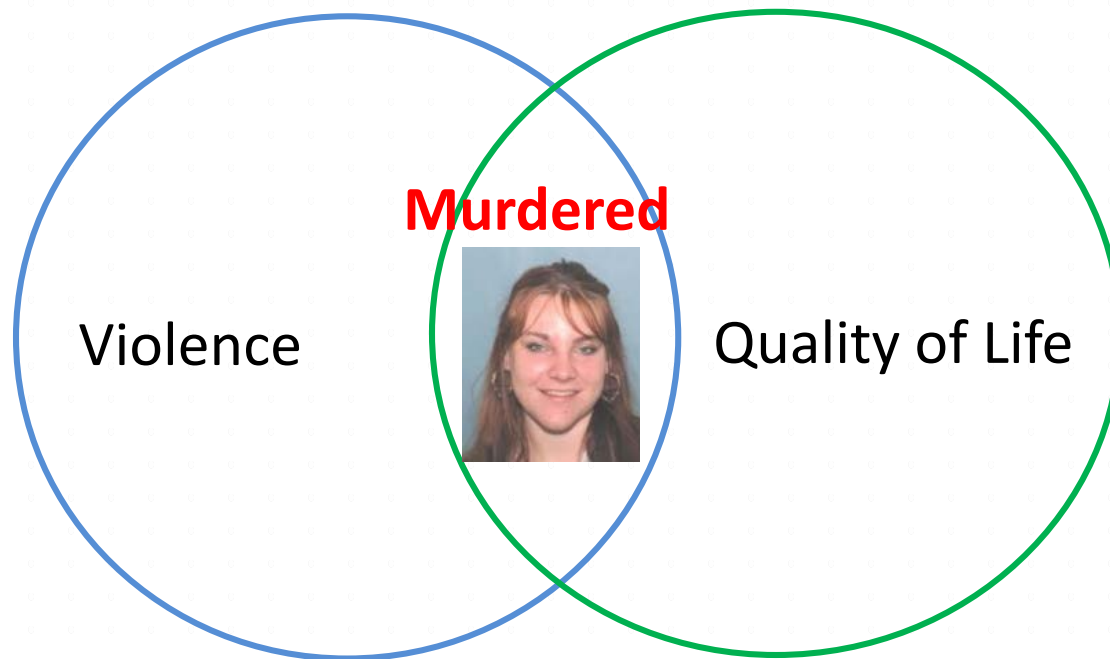
MCMICKEN PERSONS AGAINST TRAFFICKING HUMANS (PATH) PROJECT

- ▶ Goal: To reduce number of women involved in open-air prostitution market on McMicken Avenue – a street segment connecting two police districts – in Cincinnati, Ohio




Scan


Most prolific open-air prostitution market is two miles northwest of downtown core business district



Analyze

- Prostitutes identified through arrests, observation and community engagement
 - CFS, environmental, and placed-based influences analyzed to determine why area conducive to prostitution
 - Lack of guardianship, ease of vehicular access provided anonymity to offenders
 - Graffiti, litter, abandoned buildings, and overgrown foliage as contributing factors
- 

Respond

- High-visibility patrols at specific intersections using 15-minute patrol practice (Koper curve strategy)
 - Explored feasibility of disrupting traffic patterns
 - Cemented relationship with Hamilton County Municipal Court to curtail revolving door of justice
 - Ceased issuing “re-cites” to provide relief to community and opportunity to “reclaim” neighborhood
- 

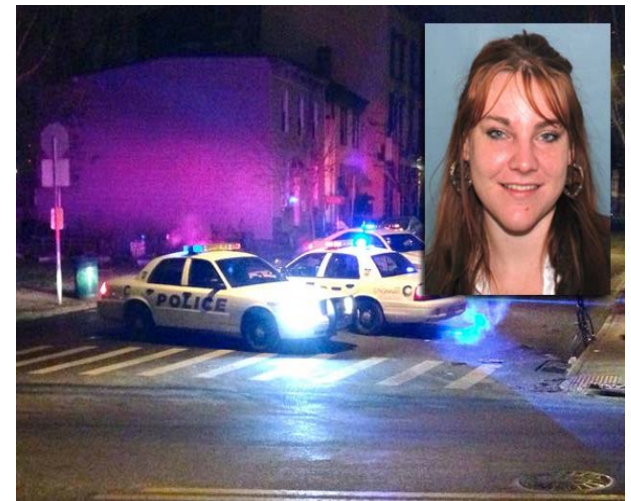
Assessment

- Analysis of CFS pre- and post-intervention
 - 17% decrease in prostitution-related runs
 - 67% decrease during “no re-cite” period (Monday to Friday 0800-1600 hours)



January 2014

- CPD hosted series of “Town Hall Meetings” to include community in identifying issues
- January 2014 known prostitute murdered with no apparent motive
- District One hosted Town Hall Meeting that evening
- Jessica’s death made prostitution most discussed issue

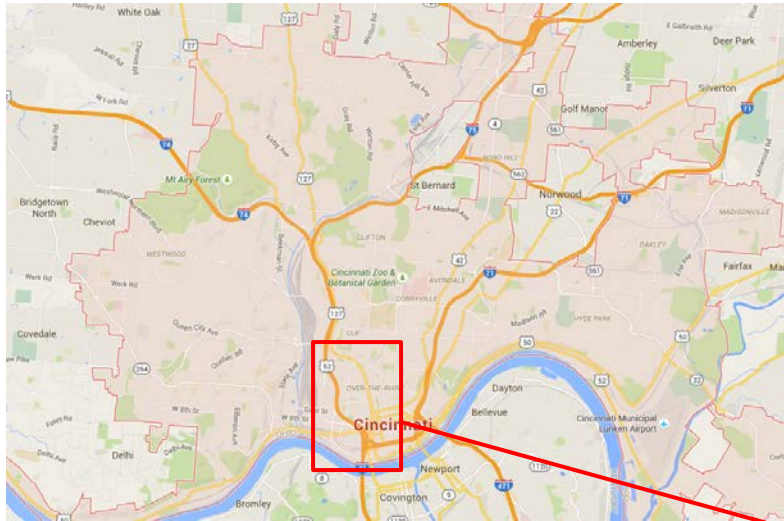


Scan

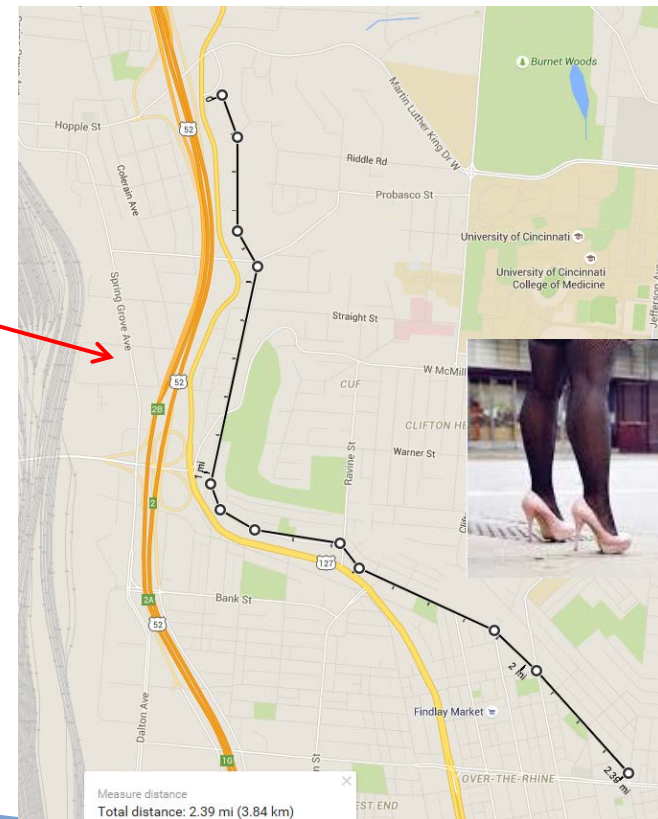


- Traditional responses to prostitution:
 - Dispatch uniform officers to area
 - Undercover “sting” or “reverse sting” operations
 - In January 2014, obvious this approach was not effective
- Focus area of complaints was 2.3-mile segment of McMicken Avenue
- Area is mixed-use: commercial, residential (single-family & multi-unit apartments)
- Many residents renters, with frequent turnover
- Significant portion of street is “unguarded” due to unoccupied buildings

Scan

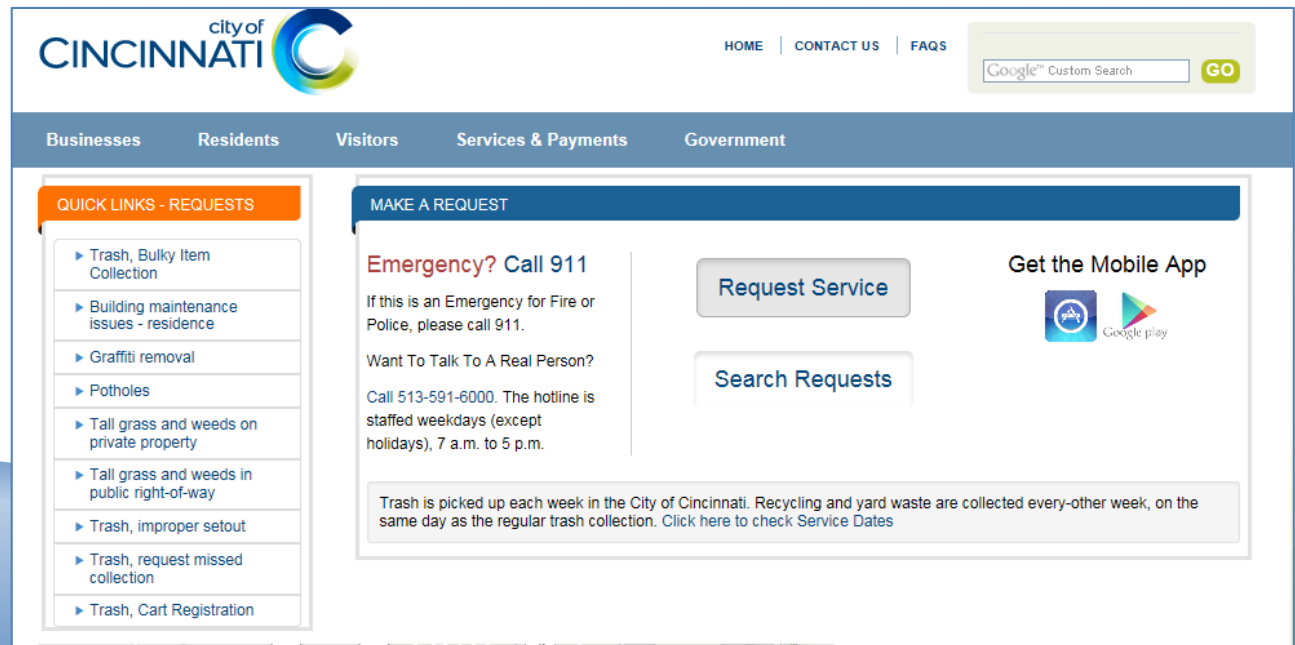


- 2009-2013: 1476 CFS on McMicken for prostitution
- No other area shows this concentration
- *CPD expert* estimates 90% of prostitutes in Cincinnati have some association with McMicken



Analyze

- Long-time problem for residents and businesses; many stopped calling police
- Lack of guardianship along McMicken provided “johns” easy access and anonymity
- 40% of area no guardianship – abandoned buildings & vacant lots
- Other locations had intermittent oversight during business hours only
- During daytime, residents not home to provide guardianship
- CPTED analysis conducted on multiple locations
- Service requests:



Analyze

- Quality-of-life issues reported through customer service request system
- Comfort spaces providing places to eat, rest, or sleep



Service Window

Food prep area

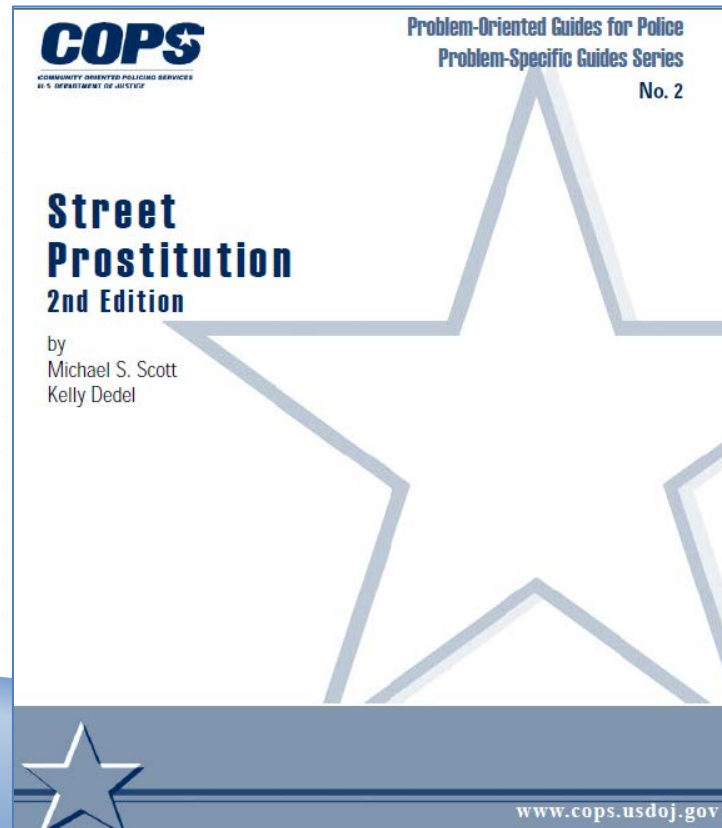


Water
Supply



Analyze

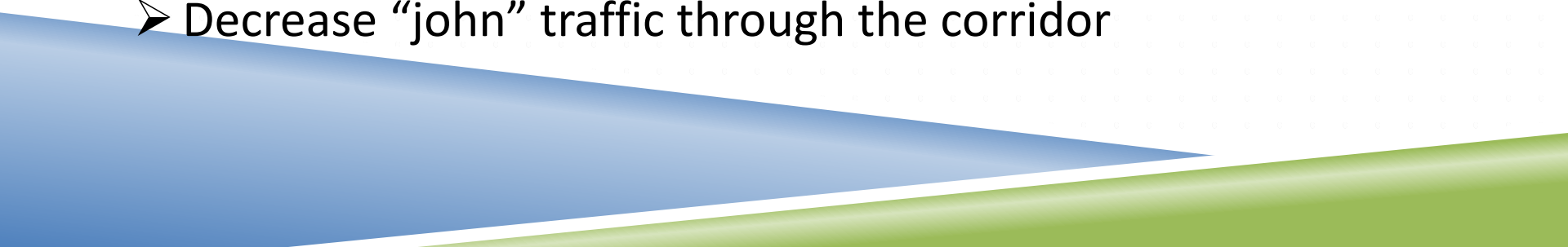
- Traditional responses: Sting and reverse-sting operations, and civil penalties to impound vehicles
- Recidivism by prostitutes overwhelming
- **No repeat offenders among “johns” arrested**



Respond

- Two officers selected to form new response:
 - **Specialist Nate Young** – 22-year veteran, 11 years in Vice section
 - **PO Katie Werner** – 15-year veteran, 8 years in Crime Analysis and Problem Solving Unit
 - **PO Lisa Johnson** was in-house expert: 5 years working with trafficked women on McMicken

Project Goals

- Decrease number of women loitering to solicit on McMicken
 - Collaborate with community to increase awareness through CFS
 - Encourage women to enter CHANGE court
 - Decrease “john” traffic through the corridor
- 

Respond

Introductions

- Officers met residents, businesses and commuters
- Consensual contacts with 3-4 prostitutes daily
- Drug addiction, abuse, failed rehab commonplace
- Many were mothers who had lost child custody
- McMicken was place to score drugs and easy access to clients
- Almost everyone had known Jessica
- Women told police what they needed to break the cycle
- Both women and police frustrated with CJS: missed court dates, re-cites common, returning women to street before intervention could work

15-minute patrols

- To gather information/be seen/assure community/conduct interviews/testify to observations

Respond

Holistic Approach

- CPD teamed with multitude of social-service providers; assessed potential of each program
- Some overlapping services, budget/space/time limitations
- Services ranged from abuse and addiction treatment, homelessness, medical care
- Incarceration was barrier to assistance
- “Catch-and-release” strategy had to change
- Officers reached out to Municipal Court Judge Heather Russell
- Establish CHANGE court (Changing Habits of Addiction and creating New Goals is Empowering)

Judge Heather Russell



Respond

Process to identify potential candidates for CHANGE court – 3 means pathways:

1. Officer makes prostitution arrest OR contacts woman with prostitution-related warrant
 2. Pre-trial review of women's docket for specified offenses
 3. Pre-trial review of residents of *Talbert House* (Rewards Jail Intervention Program)
- Selected women offered appearance before Judge Russell
 - Court environment more conducive to long-term rehabilitation
 - **Two-year** process involves Sheriff, electronic monitoring unit, probation, medical professionals, and social-service agencies

Respond

Situational crime prevention

- “Johns” cruised McMicken: several “escape” routes
- Idea: close portions of street to interrupt cruising
- Partners
 - Department of Transport and Engineering
 - Cincinnati Fire Department
 - Metro Bus Service
 - Community Councils
 - Residents and Businesses
 - City Council and Manager
- Proposed experiment of strategically placed barricades

Respond

Situational Crime Prevention - Barricades

- Barricades drew attention and introduced with media blitz
- Coincided with doubling civil fines of “johns”
- Cincinnati City Councilmembers Yvette Simpson and Amy Murray led barricade and CHANGE court plan



Respond

Situational Crime Prevention - Barricades
April, 2014 – Barricades erected.....



But.....We forgot about school buses!



Fixed – Moveable portion plus manpower

Respond

Situational Crime Prevention - Barricades

- Despite overwhelming community support, not all were happy
- Some publicly demanded barricades be removed and filed court action for disruption of bus service
- Meeting with lead opponent to explain project: spokesperson had demanded police response to prostitution
- Limited-mobility bus service never interrupted
- Other community group offered to establish “Ride Share” – offer declined
- No bus stops were more than 400 yards from any stop on McMicken



Respond

Situational Crime Prevention - Barricades

- Neighborhood most impacted by prostitution supported barricades
- Testified on their effectiveness at City Hall
- 30-, 60-, and 90-day assessments



Respond

What the "johns were saying"



Yesterday 07:28

#4618

Garyhb ○

Senior Member

Reports: 26

Garyhb

Roadblock

There's a channel 19 satellite truck on McMicken near straight street I'm sure that has something to do with the road blocks that are coming later this week. There isn't a single girl on the streets anywhere on McMicken either.

Reply With Quote

Yesterday 03:34

#4617

Mr Boombastic ○

○

Senior Member

Reports: 503

Mr Boombastic

That.Being.True.

If this is true then lets understand somthing. There is a Huge difference from East, Central, West McM. If you are Cruising pass McMillian towards Marshal the residents want the SW & Drug Dealer action moved from area all the way to MLK.

The residents Central McM from Brighton Approach down to Vine are use to the daily action. People Come & Go.

East McM from Vine to Main is a Haven for Dealers. Not much real SW action, but sometimes.

So if residents are writing down license then it will be up Marshall that are and by Straight St. I can see their point.

I Never Liked Cruising That Area Even When I Lived Over There.

Pay Attention!

Originally Posted by **DickHerDown** [View Original Post]

Stay away from mcm for the next seveal months fellas. I was told by a source that they are about to do some heavy clean up in that area and that residents will video tape the cars SW are getting into and call in to report license plate numbers and automobile description.

Respond -What the "johns were saying"

Yesterday 21:34

#4626

GNW20 ◊

Senior Member

Reports: 33

GNW20

I would think not

Hopefully no one is stupid enough to go to MCM but you never know. Wonder where everyone will go to since the ole stomping grounds are done for the summer.

 Reply With Quote

Yesterday 18:11

#4625

CockNumb ◊

◊

Senior Member

Reports: 45

CockNumb

SW

 Originally Posted by **DavidNgrk** [View Original Post]

You mean those highly touted street barriers aren't fixing the apparent SW problem? Sarcasm.

They all left the mcm area and are in plenty on this side of town none where the barriers are LOL.

Today 09:52

#4630

WyldeChild99 ◊

◊


Senior Member

Reports: 63

WyldeChild99

McMicken

This whole thing blows. I live off McMicken, and used it as my main thoroughfare to get downtown. Those dickheads have ruined my summer in two ways now.

 Reply With Quote

Today 00:49

#4629

CharmingBlake ◊


◊

Forum Advertiser

Reports: 168

CharmingBlake

Unfortunately

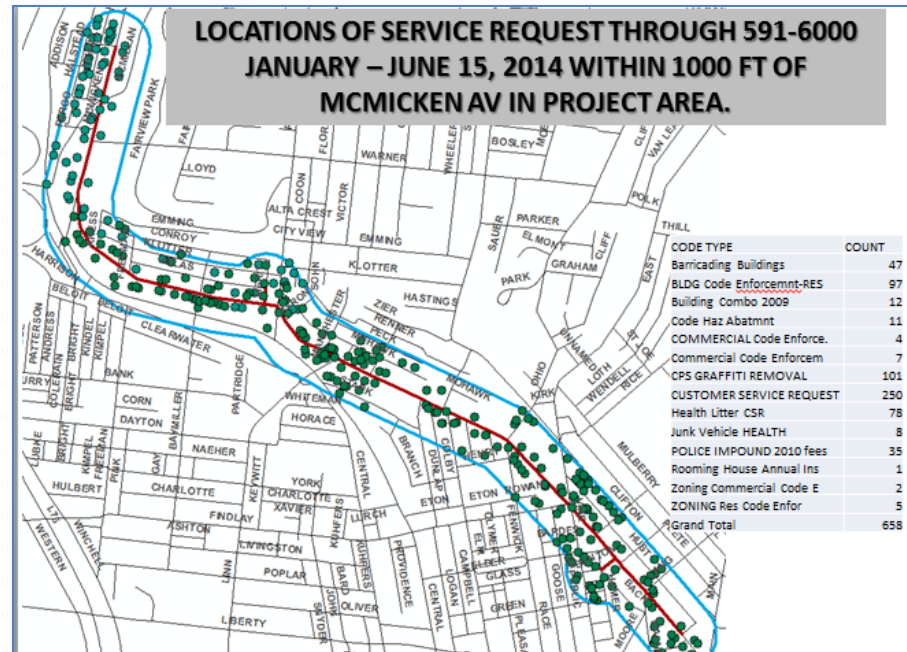
 Originally Posted by **Mcdriver123** [View Original Post]

One of the regular girls down there & one of Sweets friends told me Sweets did overdose. It is sad to post this, she was a great girl lost in her addiction.

Respond

Customer Service and Quality of Life

- Officers initiated service requests for litter, weeds, overflowing trash, graffiti, illegal dumping, etc.
- Requests logged and tracked



- Problem apartment complex on McMicken identified: known for housing prostitutes and as drug shooting gallery and sex site
- Building owner agreed to establish “no-guest” policy

Respond

Stings

- More than dozen sting operations conducted (4 solicitations stings, 3 three reversals)
- About 65 arrests

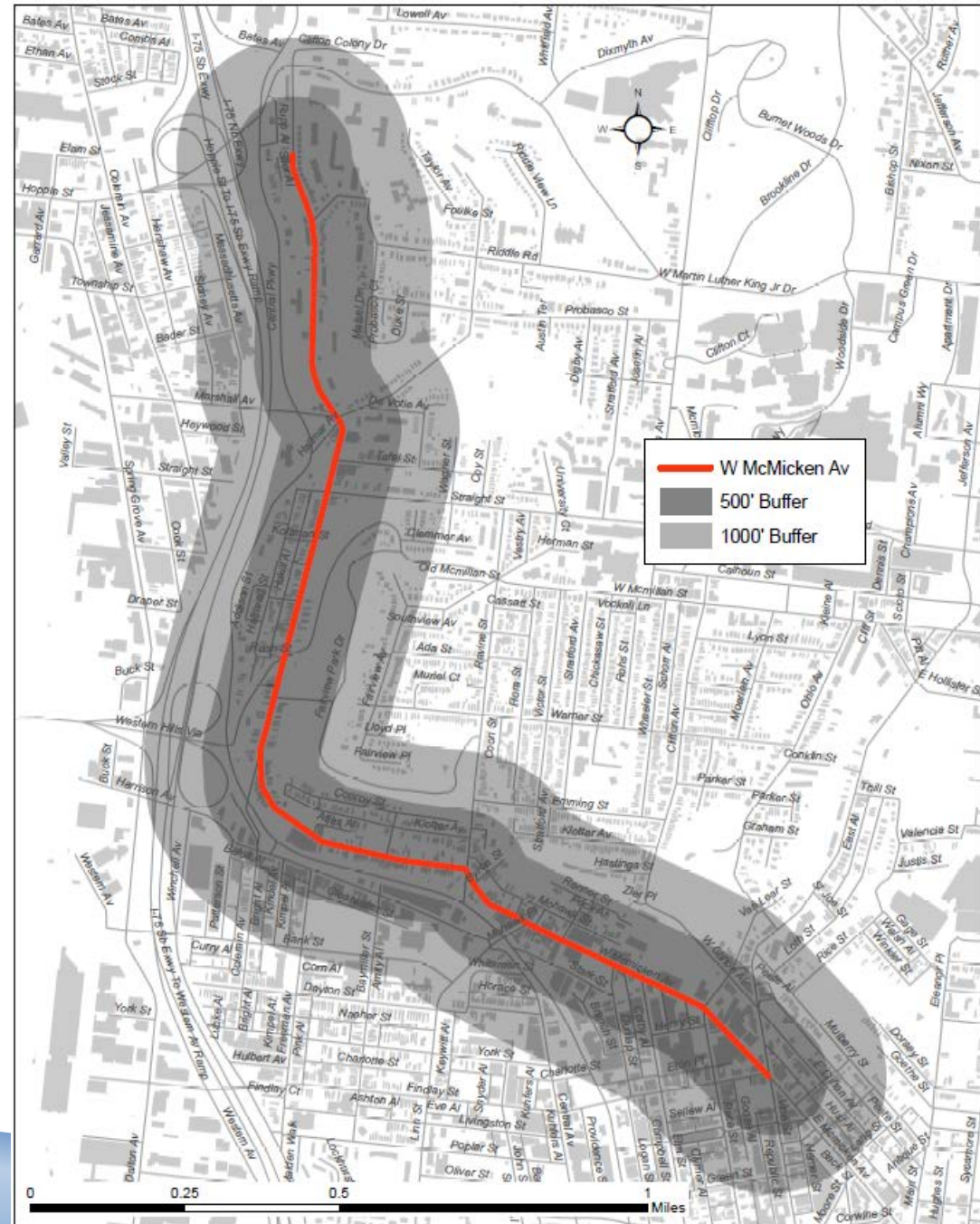


Assessment

- **Prior** to barricades (March 2014) – **10 arrests** of “johns”
- Reduced to 6 **during 90-day period**
- Foot patrols caused significant decrease in number of women observed on McMicken
- Vice unit attempted 2 **stings** during this period with **zero arrests**
- Residents’ personal observations confirmed minimal illicit activity
- Sweep of area **during 90-day period** netted just 1 **arrest**
- Final sweep in December 2014 netted just 2 **arrests**
- Officer Werner transferred to another district
- Specialist Young continued high-visibility patrols and established community trust and legitimacy
- **Overall calls related to prostitution decreased 67%**
- Diffusion of benefits within 1000 feet of target area

Review of weekly CFS
Prostitution
Disorder
Drugs
Combined*

Assaults, drugs,
criminal damage, guns,
noise, person down,
prostitution, robbery,
weapons, place found
open

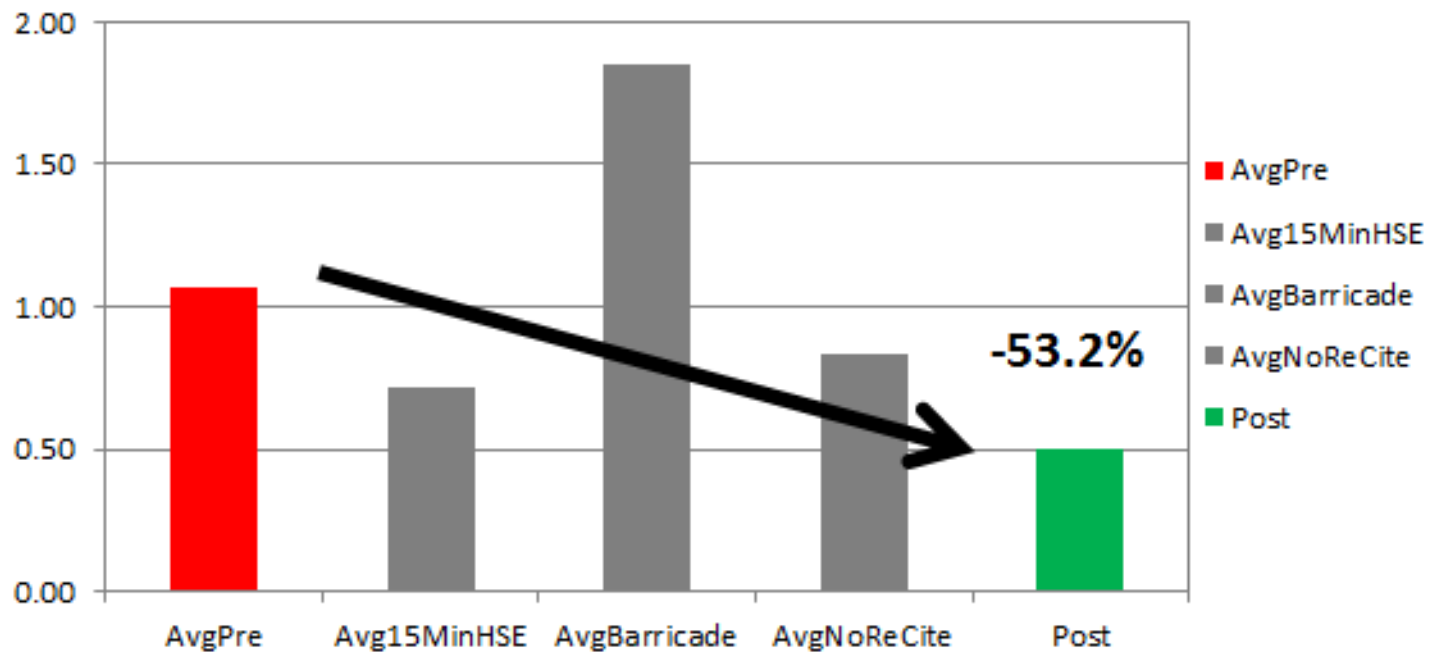


Assessment – Prostitution Runs

PROSTITUTION RUNS-Target Times (Mon-Fri 8a-4p)

	AvgPre	Avg15MinHSE	AvgBarricade	AvgNoReCite	Post	%Δ	Pre-Post T-Test
All	1.52	1.07	2.85	1.17	0.50	-67.0%	0.0065
1000' Buffer	1.17	0.93	2.08	0.97	0.50	-57.4%	0.0377
500' Buffer	1.07	0.71	1.85	0.83	0.50	-53.2%	0.0564

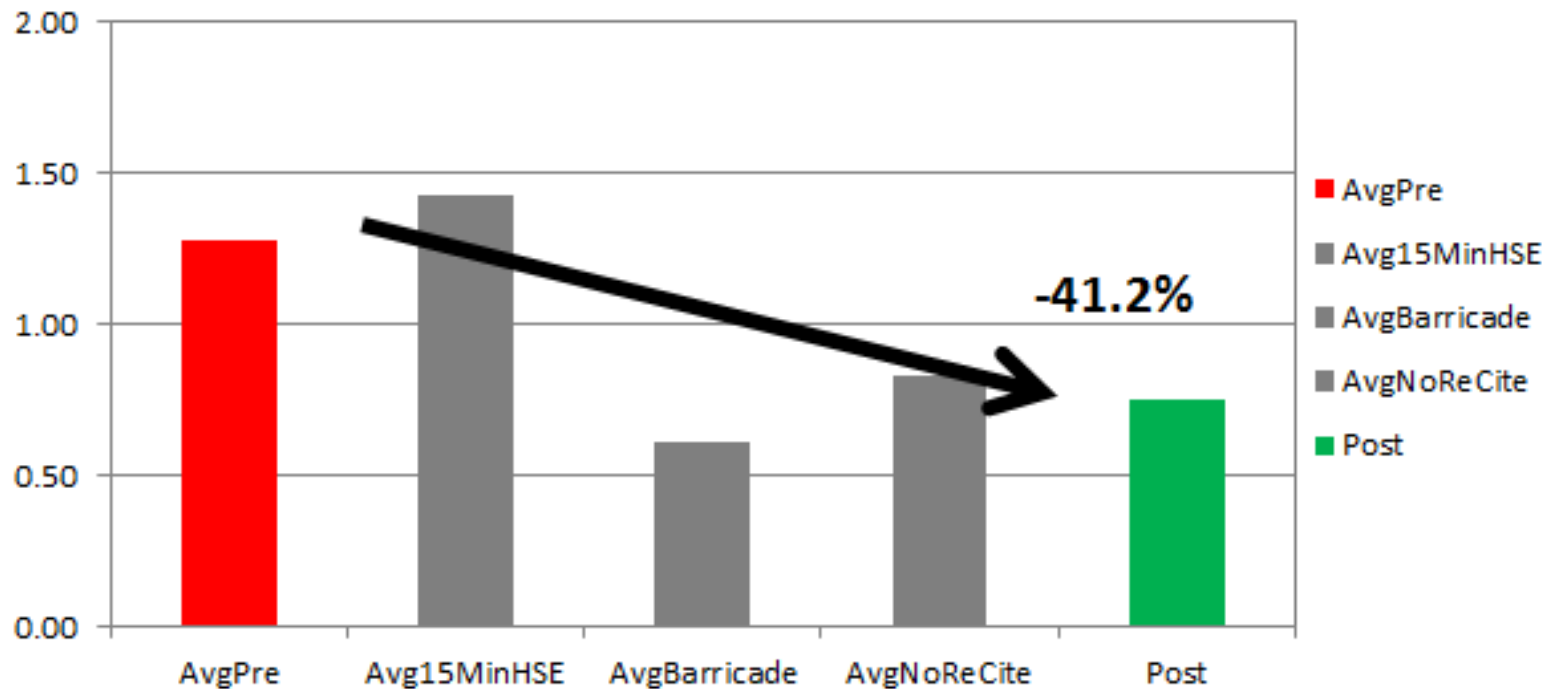
Average Weekly Prostitution Runs (Mon-Fri 8a-4p only)



Assessment – Disorder Runs

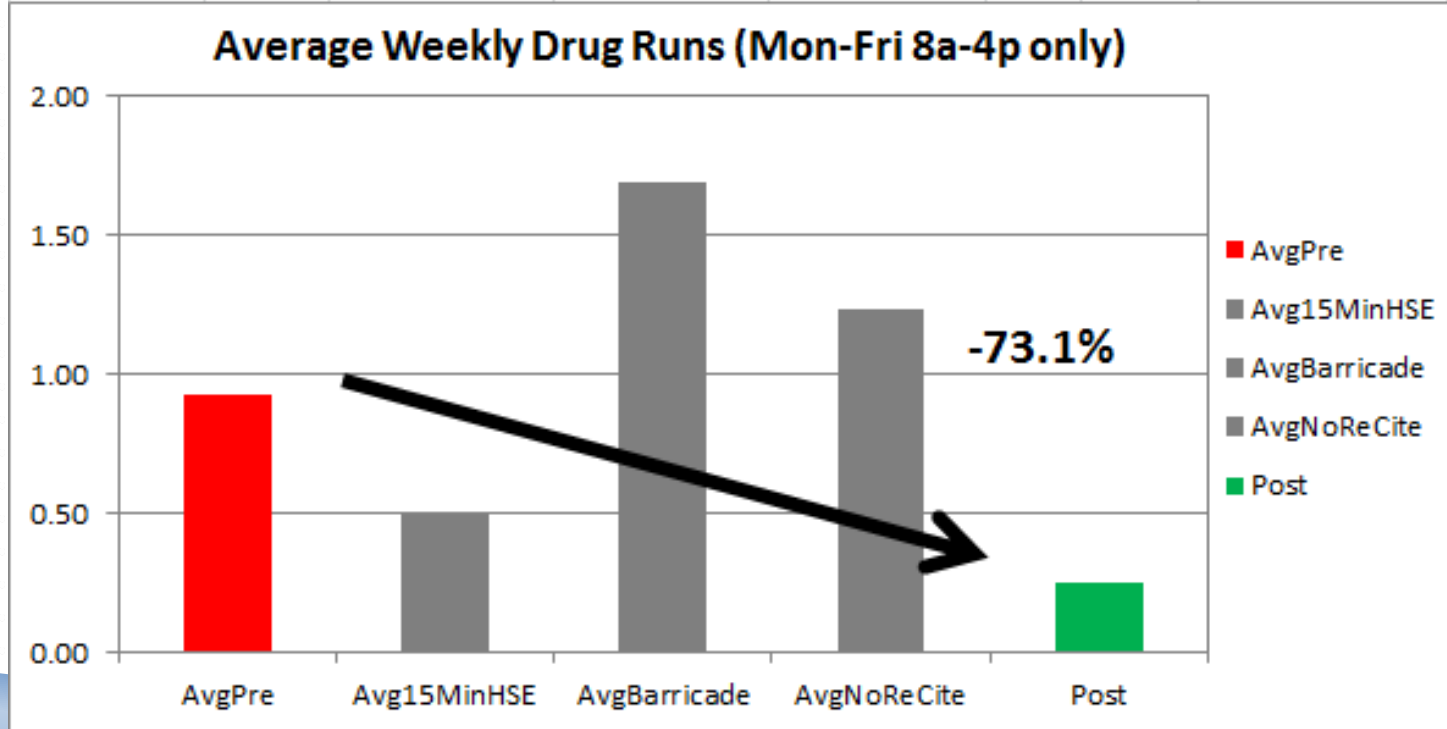
DISORD RUNS-Target Times (Mon-Fri 8a-4p)							
	AvgPre	Avg15MinHSE	AvgBarricade	AvgNoReCite	Post	%Δ	Pre-Post T-Test
All	1.28	1.43	0.62	0.83	0.75	-41.2%	0.0588
1000' Buffer	1.28	1.43	0.62	0.83	0.75	-41.2%	0.0588
500' Buffer	1.28	1.43	0.62	0.83	0.75	-41.2%	0.0588

Average Weekly Disorder Runs (Mon-Fri 8a-4p only)



Assessment – Drug Runs

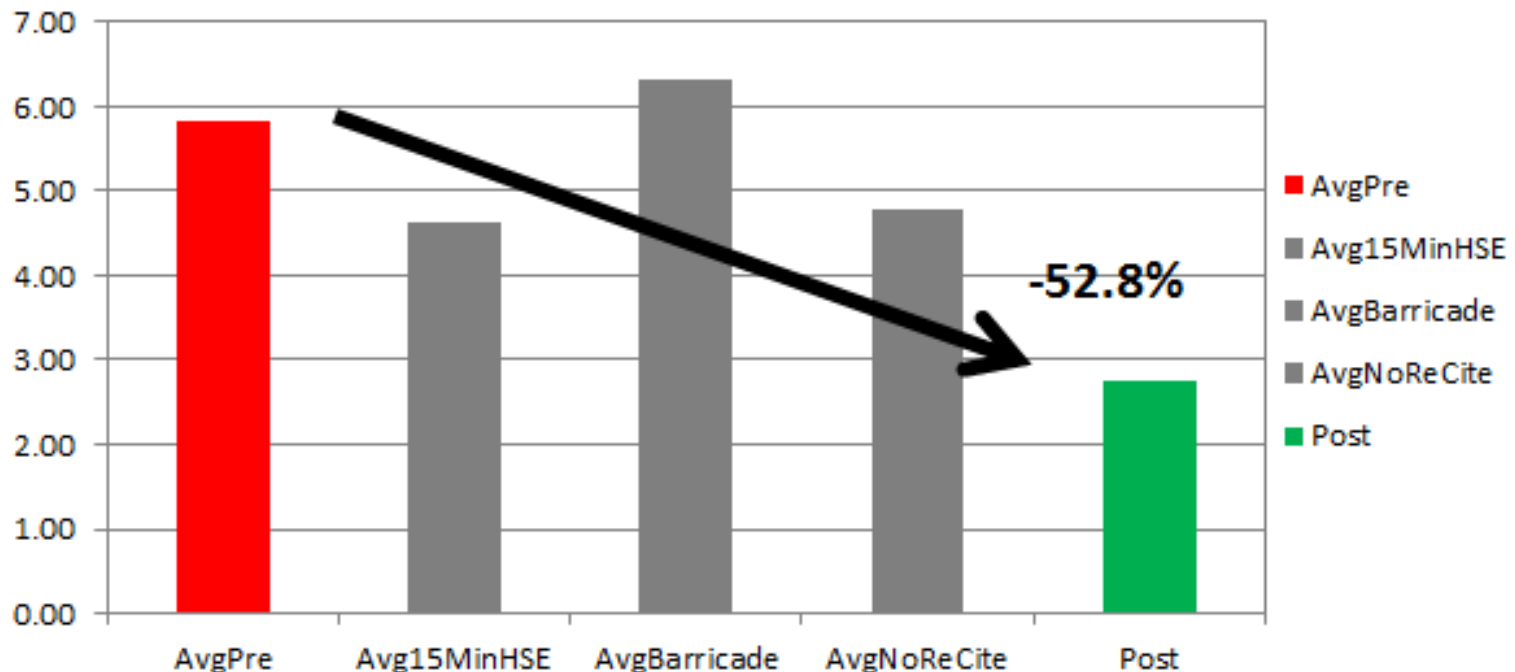
DRUG RUNS-Target Times (Mon-Fri 8a-4p)							
	AvgPre	Avg15MinHSE	AvgBarricade	AvgNoReCite	Post	%Δ	Pre-Post T-Test
All	10.52	9.79	13.00	13.13	9.50	-9.7%	0.2570
1000' Buffer	2.31	1.86	2.77	2.30	1.50	-35.1%	0.0877
500' Buffer	0.93	0.50	1.69	1.23	0.25	-73.1%	0.0033



Assessment – Combined – Assaults / Criminal Damaging / Disorder / Drug / Gun / Noise / person down / prostitution / robbery / weapons / place found open

SELECTED* RUNS-Target Times (Mon-Fri 8a-4p)							
	AvgPre	Avg15MinHSE	AvgBarricade	AvgNoReCite	Post	%Δ	Pre-Post T-Test
All	48.72	41.93	53.54	45.97	45.5	-6.6%	0.2683
1000' Buffer	10.59	8.79	12.15	9.03	7.75	-26.8%	0.0026
500' Buffer	5.83	4.64	6.31	4.77	2.75	-52.8%	0.0004
d open, prostitution, robbery, and weapon runs.							

Average Weekly Selected* Runs (Mon-Fri 8a-4p only)




Assessment

CHANGE Court:

- **22 women embraced opportunity:** Several relapsed and re-introduced
- **13 various stages of process** – 1 removed (at request of a defense attorney)
- Only 5 CPD officers involved in initial stages of CHANGE process
- Police Department continues to assess court's success before implementation department-wide

Lessons Learned

- Project success relied on momentum and cooperation of involved community councils (especially West McMicken Improvement Association)
 - Persistence, collaboration, support, with police and city was immeasurable
 - Most successful intervention was close relationship maintained with City through neighborhood officers
- 

Agency and Officer Information

Key Project Team Members:

- Captain Mike John, District One Commander
 - Specialist Nate Young, Vice Section
 - Officer Katie Werner, Quality of Life Enforcement Team
 - Hamilton County Municipal Court Judge Heather Russell
- 