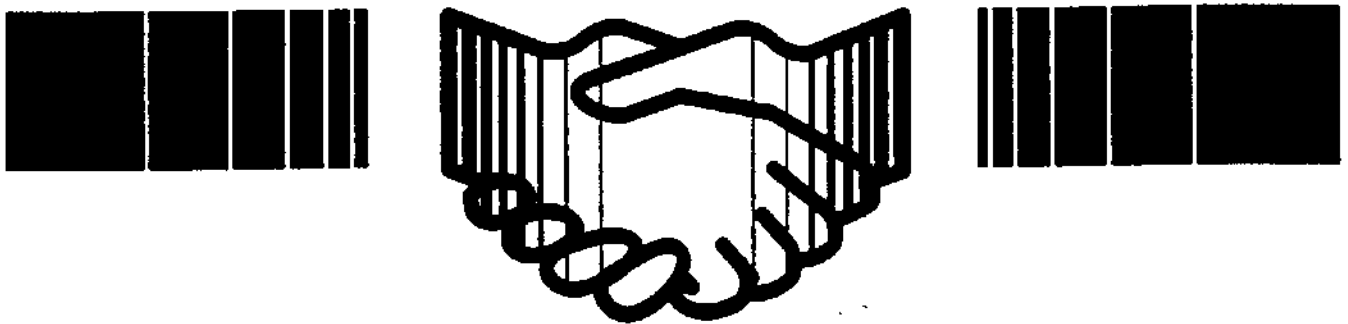

Partners in Community Safety



Partenaires pour la sécurité publique



At the core of community policing is the concept of a police/community partnership. The partnership principles of community policing recognize the crucial role of the community in the business of policing. The public play an influential part in the development of policy, the design of policing strategies and when appropriate, participates actively in the implementation of those strategies. Working in partnership, with common goals and complementary strategies, the police and the community can deal more effectively and efficiently with crime than either can do on their own.



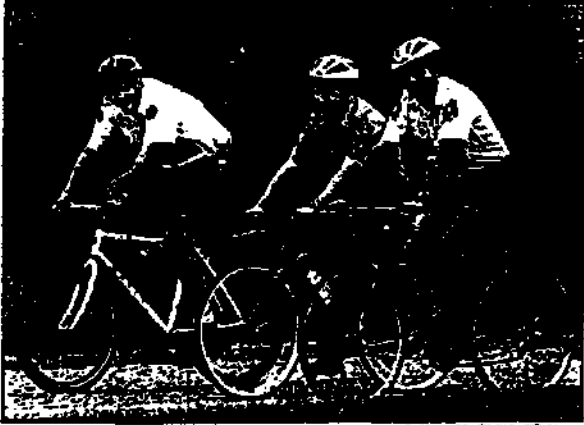
PROJECT: YOGI BEAR
Crime Prevention Program

PROJECT: YOGI BEAR

Crime Prevention Program

THE SPECTATOR, Monday, November 7, 1994

Bronte Creek Provincial Park security officer Jeff Levine (left) along with Halton Police Const. Dave Thomas (centre) and park superintendent Bob Kloke, enjoy a ride through the park while on patrol.



Project Yogi Bear
Joint plan by
OPP and
Bronte Creek
aimed at
making park
safer for users

By HOWARD MOZEL
Oakville Beaver Staff

Though the police cannot be everywhere, they could be anywhere.

Ontario's worst if you're a law-breaker, but counting down for the thousands who head to Bronte Creek Provincial Park. After all, Project Yogi Bear - the new joint effort between the OPP and the Ministry of Natural Resources - is designed to ensure the safety and well-being of the enjoyer, not the law.

The idea is simple: have uniformed officers from the OPP's Milton detachment join park staff on bicycles during random patrols of the area. With 1,690 acres and more than 25 miles of roads and trails to cover - some inaccessible by car - bikes are a valuable tool. Thanks to the doctrine of bikes by The Fitness Technique in Milton, the pilot project has been underway since July.

"Without them we'd be back to foot patrol and cruisers," says OPP Constable Dave Thomas. "But cars are non-effective. People can see you coming a mile away."

According to park superintendent Bob Kloke the project came about as a result of a 25% increase in reported crimes and - like most provincial agencies - contacts to his staff. Now, park security officer Jeff Levine and others from the added weight of an OPP officer along for the ride. The province dovetails nicely with the OPP's community policing program, providing a positive public relations opportunity as well.

"This allows for closer contact," explains Thomas. "We don't have time to talk to everyone."

Bob Kloke: "We want to ensure everyone's visit is as enjoyable as possible."

The OPP are not immune to outside critics, however, an inspector will be appointed sparingly. Still, even the thought of a badge clearly cycling through the woods can act as a deterrent.

Thomas admits it clear this crime is not limited to the park. (That's reports, for example, increased from one to four last year.) There have, however, been incidents of aggravated assault and a few in Liquor License Act violations. In fact, Kloke says most problems in the park start with alcohol.

"What staff contacts the potential is there for it to get a little crazy," says Kloke.

Since traffic-related infractions are still a priority with the OPP, Thomas said consulting illegal drinking prevents parking park-goers from hopping in their cars when they leave and becoming a nuisance on the road.

"We're trying to nip it in the bud," said Thomas who, with Constables Al Vandyken and Devon Williams, form the core of Project Yogi Bear. "We're switching from a reactive to a proactive approach."

Officers will carry radios and will never be out of contact with their detachment. In the event of an outside emergency, the bike simply goes in the trunk and off they go.

From April through September 1992, more than 129,000 people visited the park with approximately 60% of that number coming on weekends. Thomas said the pilot project will likely wind down in September but officers will still make appearances during special events in the fall.

Winter patrols in park

'Yogi Bear' will stop car thefts



POLICE ARE determined to prove thieves operating in Bronte Creek Provincial Park are not smarter than the average bear.

Project Yogi Bear, usually in hibernation during winter months, is going to be very visible in the Park this winter.

Ontario Provincial Police arrived at that decision after reviewing Bronte Park's changing and persistent needs.

Although the random bicycle patrols had significantly reduced illegal activities during the park's busy summer months, another concern had developed.

A research team comprised of OPP constables Al Vandyken and John Burgen discovered that a substantial number of "smash-and-grab" thefts from parked cars, were now taking place in winter months.

Cars belonging to people on vacation ransacked and the starting crank had become the new target.

In fact, five out of seven reported cases this year occurred in winter months, including four in January.

In conjunction with the Ministry of Natural Resources, Project Yogi Bear has expanded into a complete year-round crime prevention program to include an OPP extended service office at the park, as well as the implementation of a new crime prevention measure called Park Watch.

"Park Watch" is similar to "Neighborhood Watch," where people are encouraged to look out for each other and might even offer rewards for helping police.

The new Community Policing Extended Service Office is located at the park's post complex.

Bronte Creek Park superintendent Bob Kloke, here, and OPP Staff Sgt. Al Smolter pose with new Park Watch sign at opening of new police office.

'Yogi Bear' patrol aims at keeping Bronte Creek Park safe for users

By HOWARD MOZEL
Oakville Beaver Staff

Instead of heading off to sleep this winter, Project Yogi Bear came out of hibernation last Friday.

The OPP crime prevention plan - which proved so successful in the summer at Bronte Creek Provincial Park - is now centred around a new "extended service office" set up near the pool and skating rink. The office officially opened last Friday, in time for Ontario Crime Prevention Week which ends Sunday.

According to Milton OPP Constable Dave Thomas, a veteran of Project Yogi Bear, the program proved successful in curbing the kind of "smash-and-grab" crimes which saw visitors' cars broken into at the park. Trouble is, the illegal acts simply shifted seasons. With the park a hub of such winter-time events as skating and cross country skiing, Const. Thomas explained there was a need to expand Yogi Bear.

"The crimes are definitely not of epidemic proportions but their mere presence of crime should not be there," he said. "It will help provide a better deterrent."

The office is the result of co-operation between the OPP, the Ministry of Natural Resources and park superintendent Bob Kloke. Not only is it staffed by OPP officers, Sheridan College Law and Security students have also volunteered to help. It will also provide an outlet for Crime Prevention Ontario material and Child Find has expressed interest in running fundraising events on site.

The valuable Park Watch program enables visitors across to someone in authority in the event of trouble. Random bicycle patrols will continue and Constable Thomas said officers can see the office year-round in both an observation area and a place to finish paperwork.

Note: Halton Regional Police and Crime Prevention Ontario will have displays at Oakville Place Nov. 10th to 12th during regular mall hours.



OPP Const. Tony Mortery (on bike) is flanked by (l to r) Staff Sgt. Al Smolter, Auxiliary Const. Gerry Jamieson, Tim Orayshuk of Sheridan College's law & security program and Bronte Creek Park Supt. Bob Kloke.

TABLE OF CONTENTS

Mission Statement of The Ontario Provincial Police

O.P.P. Policing Philosophy

O.P.P. Policing Strategies

Preamble

Wttt.TF.rT: VOGT BEAR CRTME PREVENTION PROGRAM

	Section
Introduction	A
O.P.P. Community Policing Office: "PROJECT: YOGI BEAR Headquarters"	
Community Park Watch: "Park Safety is Everyone's Business"	
O.P.P. Community Volunteer Program: "Volunteers for a Safer Community"	
O.P.P. Bicycle Patrols: "Though the Police cannot be everywhere, they could be anywhere"	
Program Organization Chart	B
Program Management	C
Program Operations	D
Program Administration	E
Program Staff	F

MISSION STATEMENT
OF THE
ONTARIO PROVINCIAL POLICE

The mission of the Ontario Provincial Police is to provide a sensitive, community-oriented service that promotes an environment in Ontario in which all people will be secure in their pursuit and enjoyment of all lawful activities.

To achieve this mission, in consultation with the communities we serve, we shall:

- provide police services designed to promote public peace, well-being and security;
- provide police services designed to prevent traffic collisions and promote traffic management;
- provide police services that promote the prevention and detection of crime;
- provide police services that ensure appropriate enforcement of the law; and
- promote an organizational climate that values and encourages continual examination of our philosophies, strategies, plans and methods.

OPP POLICING PHILOSOPHY

COMMUNITY POLICING is the fundamental principle under which all our policing services will be delivered. To this end we shall:

- involve the people of the community in the identification of crime, traffic and social order problems and solutions;
- ◆ provide policing services that are consistent with the identified concerns, expectations and needs of the community;
- ◆ participate with other concerned agencies and interest groups to effectively address police and community concerns;
- promote public commitment and active involvement in the resolution of crime, traffic and social order problems;
- ◆ create an open and responsive working environment which encourages commitment and creativity by all members in the design and application of community policing services; and
- ◆ increase our effectiveness through the application of innovative reactive and proactive policing services.

OPP POLICING STRATEGIES

- Develop plans to inform and educate all employees in the concepts and philosophies of community policing;
 - Establish specific district command staff responsibilities for community policing implementation;
 - Through detachment planning committees, develop local strategies that fully support community policing;
 - Ensure planning links exist with the community, concerned agencies and interest groups;
 - Increase training in problem solving and effective presentation skills;
 - Develop systems and/or software to assist in the collection,- analysis and trending of crime and traffic data;
 - Ensure OPP policies, procedures, programs, and resources are consistent with community policing; and
 - Develop strategies to market the concept of community policing to the public.
-

PROJECT: YOGI BEAR
CRIME PREVENTION PROGRAM

The following guidelines were developed in order to help ensure that not only the operational and administrative needs of the program are maintained effectively, but even more importantly that both the safety of the public and program volunteer members is ensured.

No set of guidelines can be developed that will meet every situation, and no matter how comprehensive guidelines may be, something must remain, to intelligence and individual discretion.

All participants of the PROJECT: YOGI BEAR Crime Prevention Program are therefore expected to interpret these guidelines reasonably and with due regard for the best interests of the program, The Ontario Provincial Police, and the Ontario Ministry of Natural Resources.

The primary responsibilities of each program participant is to contribute through the program to the improvement of the quality of life and enjoyment for all citizens visiting Bronte Creek Provincial Park.

To achieve this end, it is imperative that all participants of this program carry out their community service at all times intelligently, faithfully and most of all, safely!

Your cooperation is truly appreciated.

Thank you.



A. Smouter, Staff Sergeant
Detachment Commander
Ontario Provincial Police
Milton Detachment

Jan /95

PROJECT: YOGI BEAR
CRIME PREVENTION PROGRAM
"NIP IT IN THE BUD"

INTRODUCTION

In order to continue to effectively identify and address the changing and persistent needs of Bronte Creek Provincial Park, an annual review of our crime records was conducted.

It appeared that despite the fact that random bicycle patrols had significantly reduced prohibited activity during the park's busy summer months, another concern had developed.

A research team consisting of Provincial Constables Al Vandyken and John Burgess had discovered that particular offences most disturbing to park visitors such as "smash and grabs" from motor vehicles were mainly taking place in the winter months when the initial PROJECT: YOGI BEAR was not in effect.

In fact, five out of seven reported cases up to October 1994, had occurred in the winter months, with four being in the month of January itself!

Our crime records analysis also revealed a gradual increase in calls for service, particularly within the past three years as the park's annual attendance rate had grown.

Notwithstanding the fact that prohibited activity within Bronte Park was still by no means of epidemic proportions, we believed another proactive approach to this concern could once again "NIP IT IN THE BUD".

As a result, in conjunction with the Ministry of Natural Resources, PROJECT: YOGI BEAR was expanded into a year round crime prevention program to include an O.P.P. Community Policing Office in the Park, a Community Volunteer Program and the development and implementation of a new crime prevention measure entitled "Community Park Watch".

PROJECT: YOGI BEAR Crime Prevention Program was developed with the purpose in mind of improving the quality of life and lawful enjoyment of all citizens visiting Bronte Creek Provincial Park.

**O.P.P. Community Policing Office: "PROTECT: YOGI BEAR
Headquarters"**

In planning the expansion of "PROJECT: YOGI BEAR" to a year round crime prevention program, it was ascertained that a Community Policing Office would be essential.

The office assists in improving O.P.P. visibility by serving as both an observation area and a place for visiting O.P.P. patrol officers to finish certain administrative duties.

But even more importantly, this major component of the PROJECT: YOGI BEAR Crime Prevention Program serves as "the heart" of the Community Park Watch and volunteer components while also providing an outlet for crime prevention material to the public.

Community Park Watch: "Park Safety is Everyone's Business"

Community Park Watch is a program based upon "Neighbourhood Watch" where members of the community are encouraged to look out for each other while also enabling park visitors access to someone in authority in the event of a problem.

This component of PROJECT: YOGI BEAR receives substantial support from citizens identified by the Park Superintendent as "Regular Visitors" as well as both volunteer units of the O.P.P. Community Volunteer Program.

O.P.P. Community Volunteer Program: "Volunteers For a Safer Community"

The Community Volunteer Program is an integral component of the PROJECT: YOGI BEAR Crime Prevention Program structure and consists of community members wishing to assist in the effective operation of Community Park Watch on a volunteer basis.

The Community Volunteer Program consists of two Community Volunteer units:

TINTTA: ONTARIO PROVINCIAL POLICE
Burlington Auxiliary Unit
Burlington, Ontario

Unit "A" of the Community Volunteer Program is composed of community members from the O.P.P. Burlington Auxiliary Unit. Members of this unit have several years of community volunteer service experience and provide a very positive image for the O.P.P.

TINTTB: SHERIDAN COMMUNITY COLLEGE
Law & Security Administration Program
Faculty of Community & Health Services
Oakville, Ontario

Unit "B" of the Community Volunteer Program consists of qualified students who are enrolled in the Law & Security Administration Program of Oakville's Sheridan Community College.

Participation in this program provides a student the opportunity to become actively involved in recognizing the needs and benefits of Community oriented Policing and Law Enforcement's gradual shift to a more customer oriented approach.

The program also allows the students to experience the need imposed by our changing times to admit the need for citizen help and placing a greater emphasis on proactive methods and a team concept such as this joint OPP/MNR project.

O.P.P. Bicycle Patrols:

"Though the Police cannot be Everywhere, they could be anywhere!"

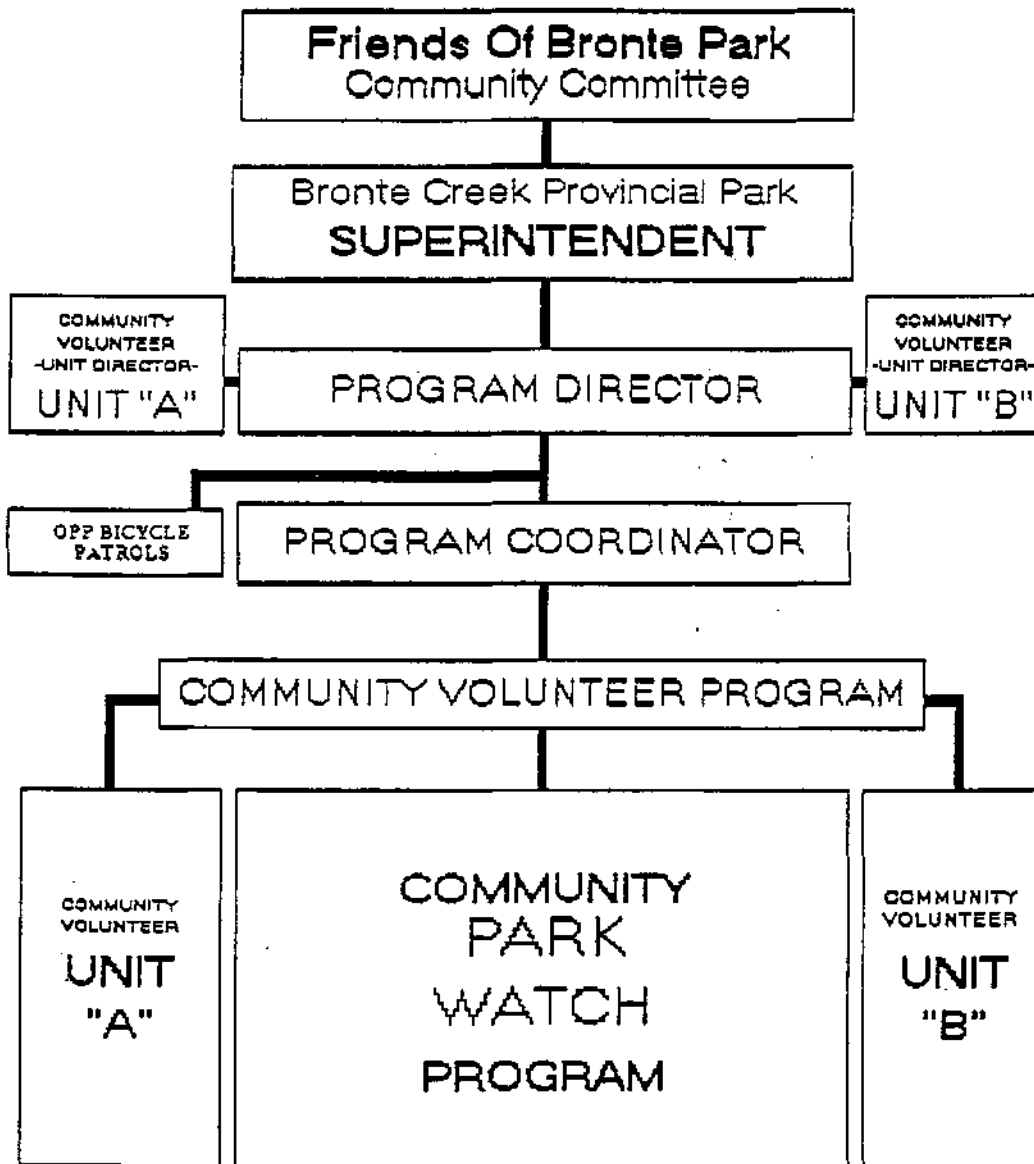
The summer of 1993 witnessed the birth of PROJECT: YOGI BEAR where random bicycle patrols were introduced to Bronte Creek Provincial Park.

Although the bicycle patrols were limited to when Milton Detachment's human resources could allow, a significant reduction of illegal activities during the Park's busy summer months was achieved.

As a result, the program's random O.P.P. Bicycle Patrols component (The Original PROJECT: YOGI BEAR) will continue each summer, where Milton Detachment's human resources are able to permit.

**PROJECT: YOGI BEAR
Crime Prevention Program**

- Organization Chart -



PROGRAM MANAGEMENT

Program Director:

The Program Director's role encompasses the analysis and development of program staff, operational procedures, and management practices.

The Program Director also acts as the O.P.P. liaison officer to the Bronte Creek Provincial Park Superintendent and the Community Volunteer Program's Unit Directors.

Program Coordinator:

The Program Coordinator is responsible for the effective management and coordination of the operational and administrative functions of the program and its Team Leaders.

The Program Coordinator is the communications link between the Team Leaders and the Program Director, and in this position ensures an efficient interchange of information.

The management responsibilities of the program coordinator include the compilation of occurrence information for analysis purposes, tabulating attendance register hours and organizing for the follow up of telephone calls to certain occurrence victims.

Team Leader:

A Team Leader is responsible for the effective management of its Community Volunteer Program Unit's function.

Additionally, the Team Leader must be aware that they are a senior program member and, in many instances, actually fulfill the function of a supervisor.

The Team Leader is the communication link between the Community Volunteer Unit and the Program Coordinator, and in this position also ensures an efficient interchange of information.

The management responsibilities of a Team Leader include staff scheduling of their particular unit and providing assistance to the Program Coordinator when required.

PROORAM OPERATIONS

* IMPORTANT: At no time shall a member of the O.P.P. Community Volunteer Program intentionally represent or perform responsibilities required of an Ontario Provincial Police Officer!

Community Volunteer Program - Unit "A"

Ontario Provincial Police
Burlington Auxiliary Unit
Community Volunteer Unit "A"

Unit Director:
Mr. Stan Woods, Inspector
O.P.P. Burlington Auxiliary Unit

ALLOCATION TO PARTICIPATE

The Unit Director may allocate an O.P.P. Auxiliary member to participate in the program and will notify the Program Director of each Auxiliary member participant.

RESPONSIBILITIES - Program Director

Upon receiving notification by the Unit Director regarding Auxiliary member participants, the Program Director shall:

- I) Organize an orientation session for all Auxiliary member participants.
- ii) Define shift assignments including matters of involvement and direction,
- iii) Ensure a Volunteer Agreement is entered with the Ministry of Natural Resources by the Auxiliary Unit Director for a specified period.

RESPONSIBILITIES - Unit "A"

The community services provided by this unit are restricted to the same level of participation in Community Park Watch as any other community member visiting Bronte Creek Provincial Park.

Participation in the program by members of this unit are strictly based upon the observation, documentation and immediate notification of a Park Warden.

In addition, the unit also plays an essential public relations role in promoting the Community Oriented image of the Ontario Provincial Police to all citizens visiting Bronte Creek Provincial Park.

PROGRAM OPERATIONS

Community Volunteer Program - Unit "B"

Sheridan College
Law & Security Administration
Community Volunteer Unit "B"

Unit Director
Mr. Dave Dickey, Professor
Field Placement Supervisor

Minimum Student Requirement: CPR/First Aid Certification
Designated grade average

*The O.P.P. Community Volunteer Program does not recognize Sheridan College Student participation as an Official O.P.P. Student Placement Program. Although requirements of the Community Volunteer Program concerning Sheridan college students virtually mirror those of the official O.P.P. Student placement Program, it must be duly noted that it is strictly a Volunteer Program requiring a minimum of 200 hours of Community Volunteer Service.

NOMINATION TO PARTICIPATE

The Unit Director may nominate a student to the Program Director, attesting in writing to the suitability of the student to participate in the Program as a Community Volunteer.

RESPONSIBILITIES - Program Director

Upon receipt of a nomination from the Unit Director, the Program Director shall:

- I) Confirm with both the Park Superintendent and the Unit Director, the number of students who have met the program's suitability requirements and have volunteered to participate in the program.
- ü) In partnership with Park Officials, Organize interviews with all candidates and upon becoming satisfied that the student is a suitable candidate:
 - A) Establish proper dress and appearance requirements for participating student volunteers.
 - B) Define shift assignments including nature of involvement and direction.
 - C) Ensure all necessary forms and appropriate security checks on students are completed in accordance to Part 1 Police Orders.

D) Unit "B" of The Community Volunteer Program is a joint volunteer partnership with the Ministry of Natural Resources and as a result, a Ministry of Natural Resources **Volunteer Agreement** must also be **entered**.

RESPONSTBTT XTIES - Unit " B "

The role of a Student Volunteer participating in the program is that of a proactive nature only.

A students participation in the Program is absolutely restricted to the observation, documentation, and immediate notification of a Park Warden.

At no time is a student volunteer to become involved with a park occurrence beyond that as described above. This regulation is vital to ensuring the success of the entire PROJECT: YOGI BEAR Crime Prevention Program.

Other responsibilities may include assisting in the staffing of the Community Policing Office as well as providing volunteer services as required to meet certain operational demands of Bronte Creek Provincial Park.

IMPORTANT: For the purposes of ensuring personal safety, all Park Watch tours shall be conducted by participants only when accompanied by another program participant



Ontario
Provincial
Police

Consent To Security Clearance Investigation

Conducted by the Ontario Provincial Police pursuant to section 47 of the Police Act, R.S.O., 1980, c. 381 as amended and the Standing Orders of the Ontario Provincial Police Force.

(print - surname, given name, middle name;

hereby consent to a personal security clearance investigation to be conducted by the Ontario Provincial Police Force in accordance with the conditions set out below:

1. All information submitted with respect to a security investigation is subject to formal verification by the Ontario Provincial Police.
2. If insufficient or incomplete information is submitted a security clearance may not be granted.
3. Where, the possibility of a criminal record exists, in respect to an applicant, based on a name search, fingerprints may be required to be furnished by the applicant as a means of positive identification.
4. False or misleading statements could result in a security clearance being denied.
5. If you have any questions regarding your security clearance, please contact an officer of the Security Branch, Ontario Provincial Police, 90 Harbour St., Toronto, Ont. M7A 2S1, telephone (416) 965-8111.
6. All information will be kept confidential by the Ontario Provincial Police.

I have read and understand and consent to the above.

Signature

Witness

Date