



# **Preventing Vehicle Crime in the Safe City Area**

**September 24, 2007**

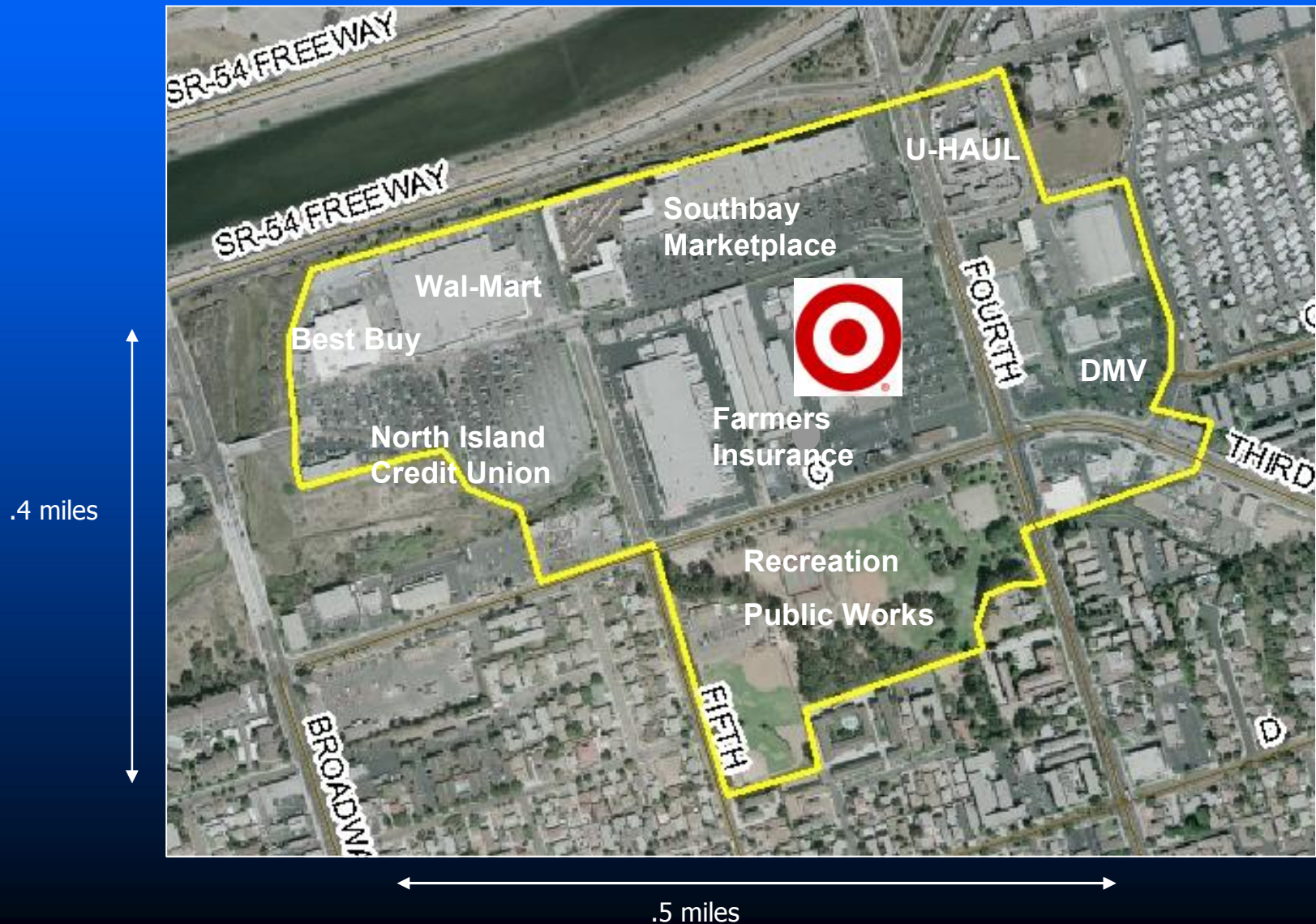
**International Problem-Oriented  
Policing Conference**

# Chula Vista City Snapshot

- 223,000 residents
- Between San Diego and Mexican Border



# "Safe City" Focus Area



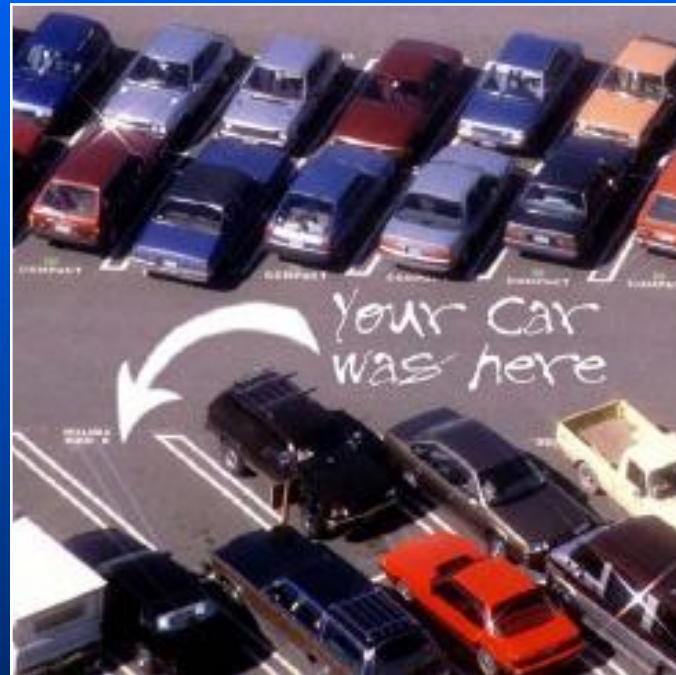
# Vehicle Crime

- Theft of cars

- Theft from cars

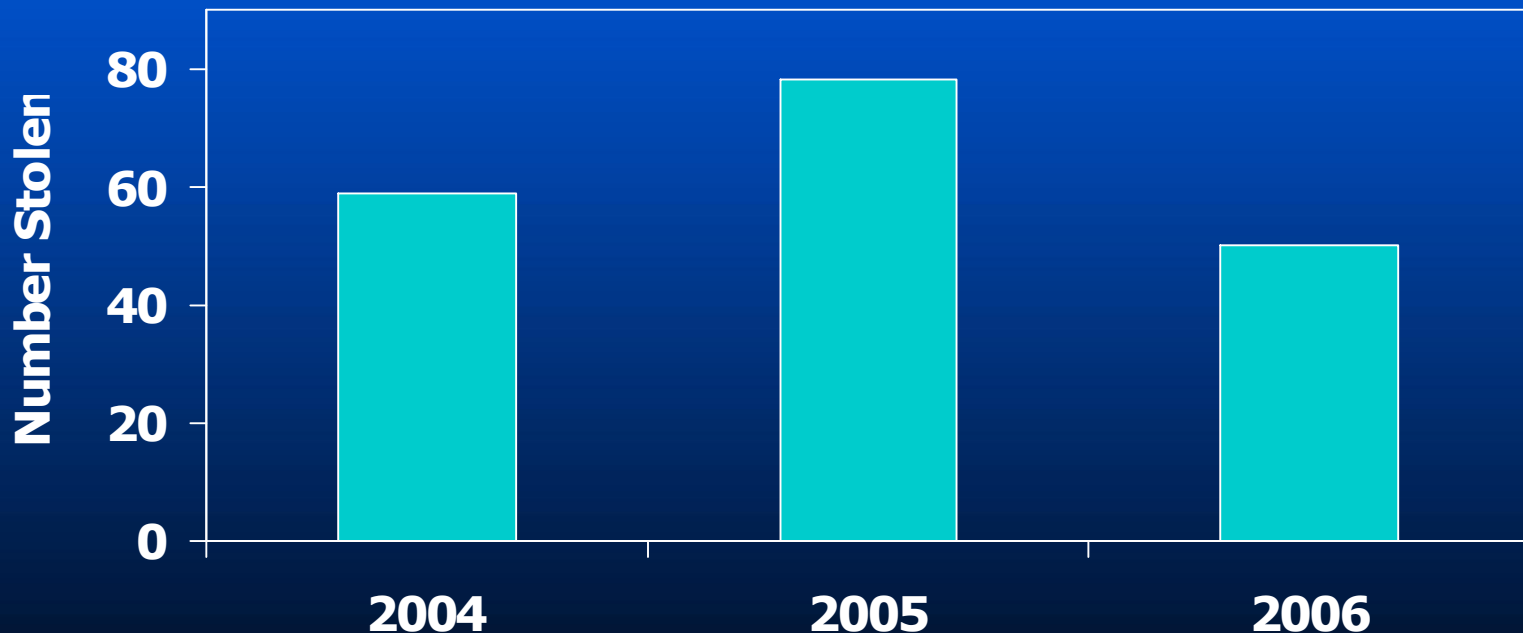
- Laptops
- Stereos/CDs
- TVs

- Damage to cars (vandalism)



# Theft of Cars in Safe City Area

- 188 cars/trucks stolen between 04-06
- 63% recovered\*



\*Chula Vista data only

# Older Cars Targeted in Safe City Area in 2006

- 71% of stolen cars were pre-2000 vehicles
- Reason: easy to steal



**1991 Honda Accord**

# Employee Cars Targeted in Safe City Area

- Per victim interviews, nearly 30% of cars stolen in 2006 were employee vehicles
  - 9 Best Buy/Wal-Mart
  - 2 Target
- 83% of stolen employee cars were pre-2000 vehicles

# 2006 Car Theft Victims\* Were Shopping In These Stores

- 17 Wal-Mart
- 9 Best Buy
- 5 Target
- 1 Ross
- 1 North Island Credit Union

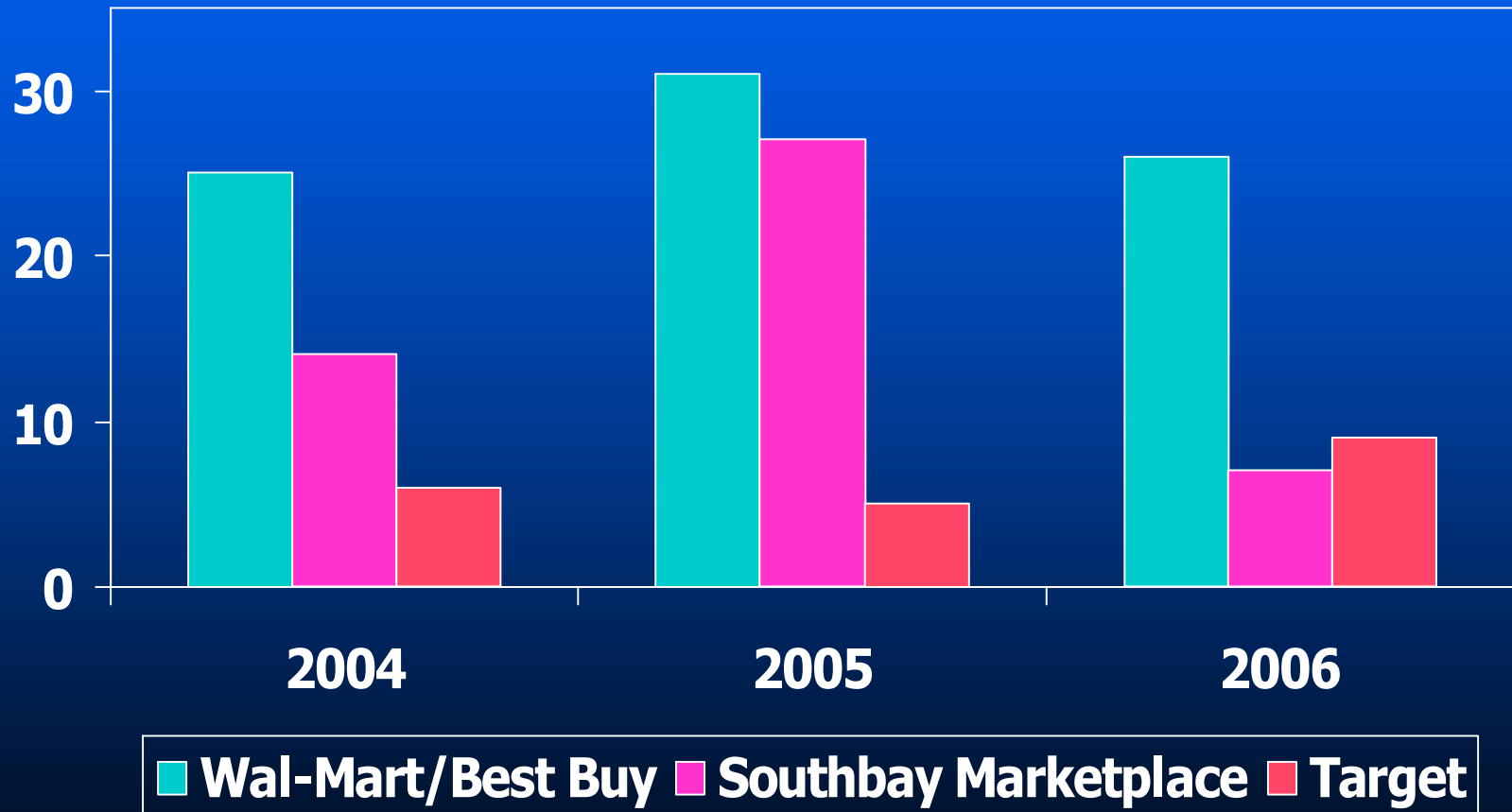
**\*Non-employees**

# Other Findings from Victim Interviews

- 50% left valuables visible in their cars
- Stolen cars not well protected
  - 43% no anti-theft device
  - 10% weren't using device
  - 40% had an alarm
  - 7% had Club/Lo-Jack/other



# 84% of 2006 Car Thefts Were in 3 Lots

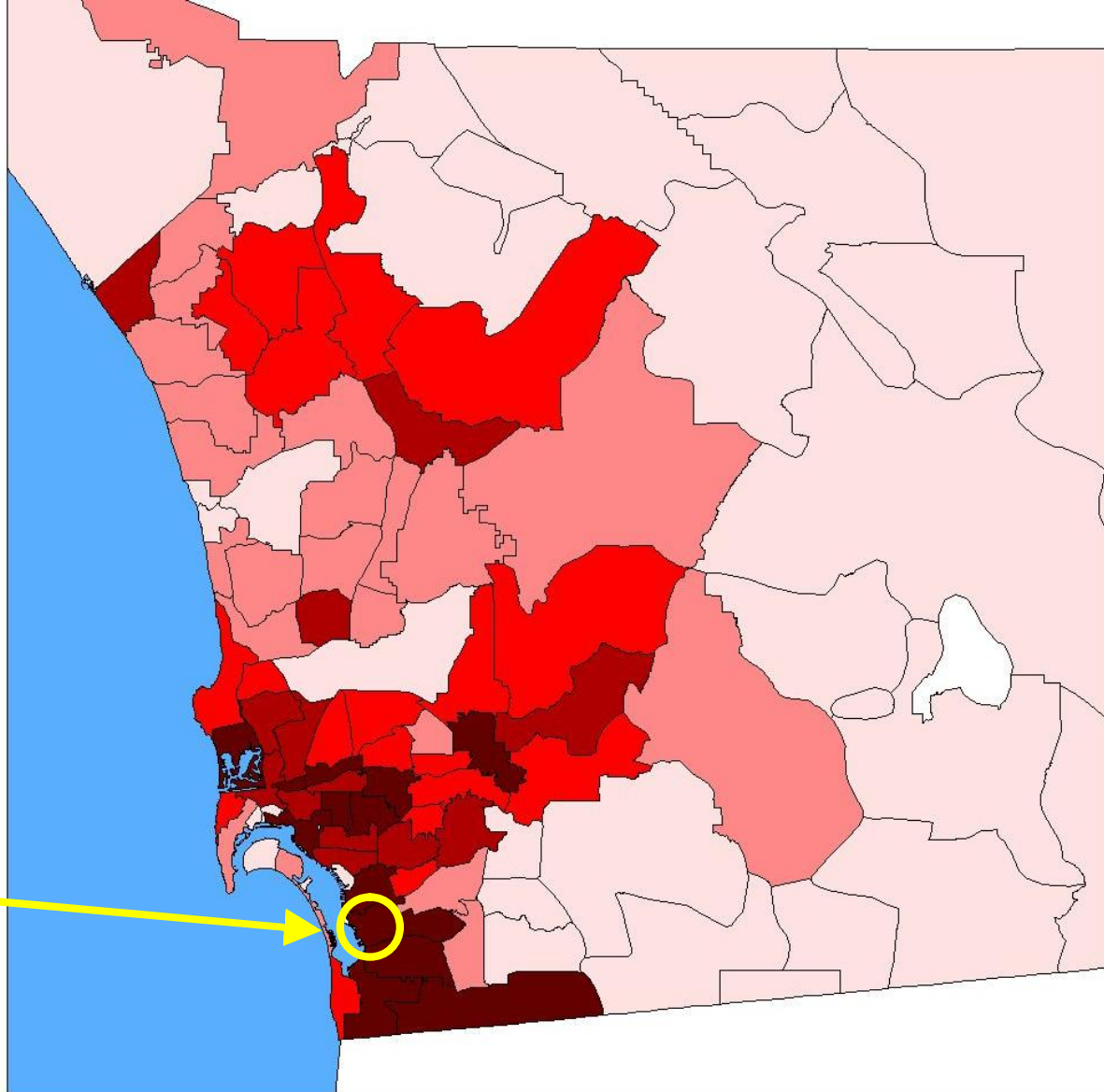


# **“Big Three” Safe City Lots Are...**

- ✓ Big
- ✓ Urban
- ✓ Within easy access to freeways
- ✓ Surface lots with many pedestrian access points; little perimeter control

# SD County Auto Thefts by Zip Code

Safe City Area

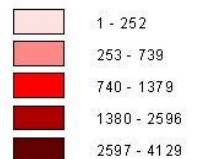


## San Diego County Auto Thefts by Zip Code

January 1, 2003 - December 31, 2006

0 5 10 15 20 25 30 Miles

### # of Auto Thefts



# **2006 Theft Rates**

## **(Per Hundred Parking Spaces)**

<b>Lot</b>	<b># of Thefts</b>	<b>Rate*</b>
<b>Wal-Mart/Best Buy</b>	<b>26</b>	<b>2.2</b>
<b>Southbay Marketplace</b>	<b>9</b>	<b>1.7</b>
<b>Target</b>	<b>9</b>	<b>1.6</b>

**\*Rate = # of thefts per year/per hundred parking spots**

**Theft Per Spot Rates: Have  
Other Cities Looked at This?**

# Car Theft Time Patterns: Day of Week and Month

- Oct-Dec. higher theft months (3-year period)
- Saturday and Tuesday higher theft days (3-year period)

# Most Likely Hours of Car Thefts

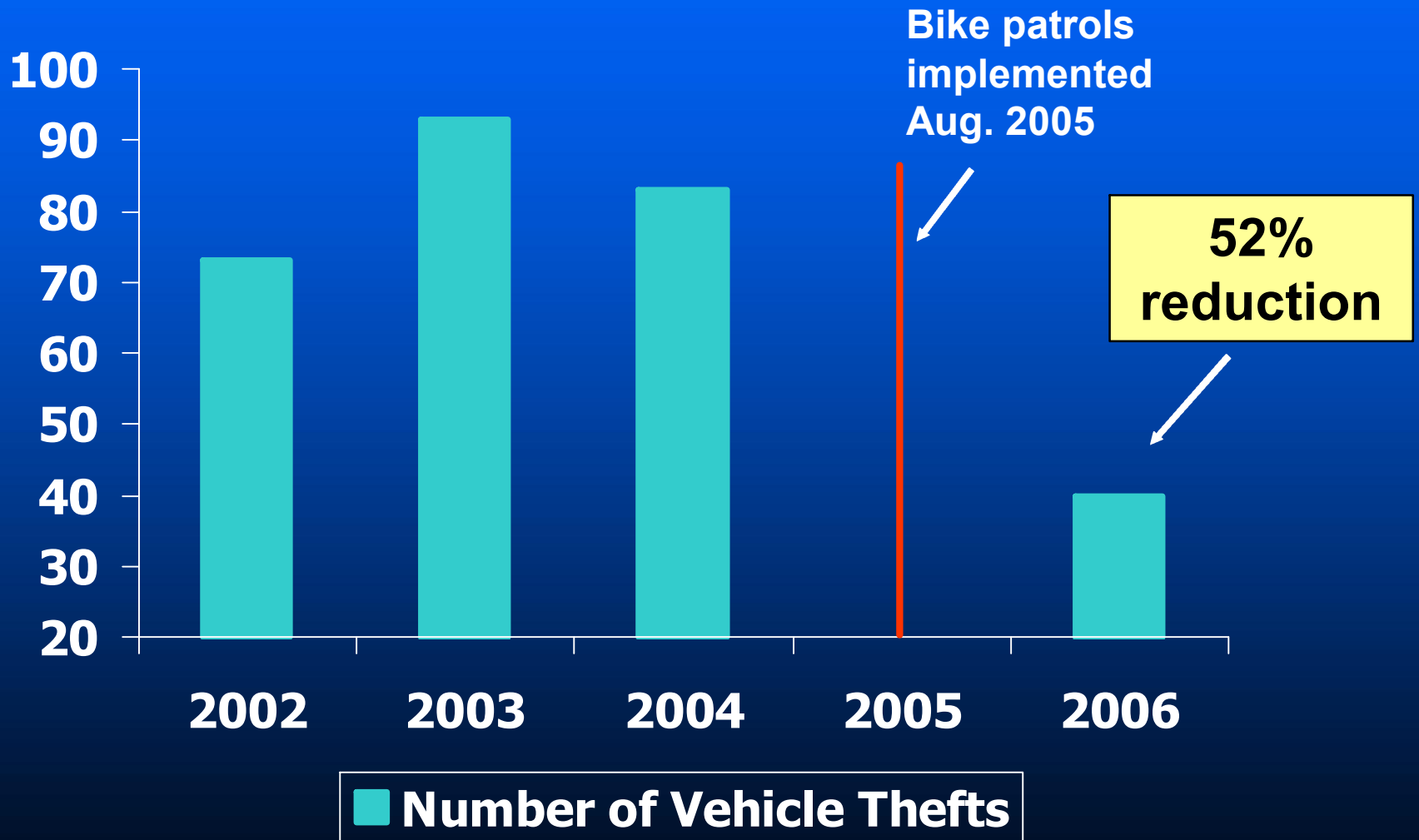
- Wal-Mart      2 p.m – 10 p.m.
- Target        Noon – 10 p.m.
- Southbay      Noon – 10 p.m.

# What Works\* to Reduce Car Theft in Parking Lots?

- Private bike patrols —————→ **Risky lots**
- Use of anti-theft devices by employees —————→ **Risky cars**

- CCTV
- Perimeter/access control
- Restricting pedestrian traffic
- Increase surveillance at entrances/exits

# Impact of Private Bike Patrols: Chula Vista Center



# Broadway Plaza: Wal-Mart/Costco

- Goal: 1 theft or less per 100 parking spots per year
- 2 concurrent private bike patrols on property



Total 2006 Thefts: 21      Rate 1.2  
nearly 60% below projections

# Southbay Marketplace

- Private bike patrol
- Car thefts reduced from 17 to 4

(second half of 2005 compared to second half of 2006)



# Brochure for Employees

- Lists high-risk vehicles
- Tips for protecting old and new cars
- In Spanish & English

You don't  
have to go to  
the extreme...



to help prevent  
**AUTO THEFT.**

 CHULA VISTA  
POLICE DEPARTMENT

[www.chulavistapd.org](http://www.chulavistapd.org)

## Get a Hidden Kill Switch

- Thieves don't like them because they can't find them.
- Cost: \$15 to \$125
- Installed at automotive electric shops.

## Other Ways to Deter Thieves

- Use a brake pedal lock.
- Never leave valuables in view, even if car is locked. Cell phones, CDs, etc. attract thieves.
- Park in a secure garage or gated area whenever possible.
- Always lock your car doors.
- Never leave your keys in the ignition, even for a minute.
- Shop in areas that have electronic gate arms at entrances and exits, and security personnel on bikes.

## Looking For A New Car?

- Make sure it has a transponder-based passive immobilizer.
- Visit [www.chulavistapd.org/aut theft/immob](http://www.chulavistapd.org/aut theft/immob) for a listing of newer vehicles with this feature.

## Don't be a STATISTIC!

1 in 71 cars registered in Chula Vista were stolen last year.  
Is your car at risk?

1 in 7 Saturn SLs (yrs.1992-1995) were stolen  
1 in 9 Toyota Camrys (yrs.1987-1991) were stolen  
1 in 9 Nissan Sentras (yrs.1991-1994) were stolen  
1 in 10 Acura Integras (yrs. 1990-1998) were stolen  
1 in 12 Ford F-150s (yrs.1997-1998) were stolen  
1 in 13 Nissan Altimas (yrs.1995-1997) were stolen  
1 in 14 Plymouth Voyagers (yrs. 1992-1996) were stolen  
1 in 15 Honda Accords (yrs.1990-1996) were stolen  
1 in 15 Honda Civics (yrs.1988-1991) were stolen

Many cars not listed above are at high risk.  
Don't chance it - protect your vehicle!

# The Message: How to Protect Your Vehicle

- Newer Cars: Passive Immobilizers
  - [www.chulavistapd.org/autotheft/immob](http://www.chulavistapd.org/autotheft/immob)
- Older Cars:
  - Hidden kill switches
  - Brake pedal locks



# Safe City Recommendations

## Parking Lots

- Redeploy Wal-Mart security staff from carts to bikes
- Consider bike patrol in Target lot (1)
- Install warning signs in lots

## Employees

- Distribute anti-theft info packets to all Safe City employees
- Consider employee subsidies for kill switches

# Questions?

## Contact Information

- Karin Schmerler  
619-409-5410  
[kschmerler@chulavistapd.org](mailto:kschmerler@chulavistapd.org)